



1203

 **LUXY.**

CATEGORIA C/  
CATEGORY C

TESSUTO/  
UPHOLSTERY

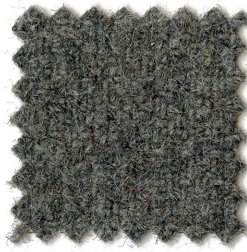
 **FENICE**  
**Pugi.rg®**



1249



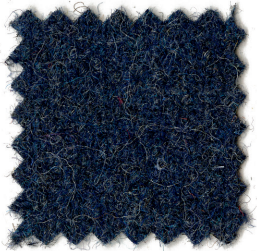
1238



1229



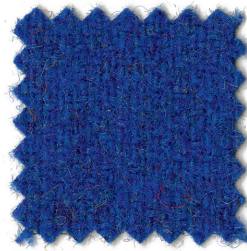
1228



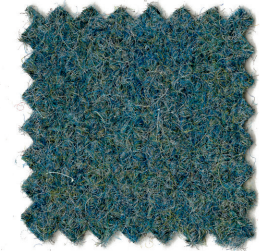
1223



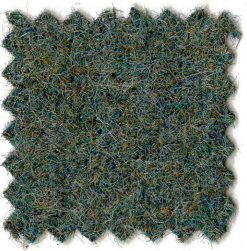
1235



1224



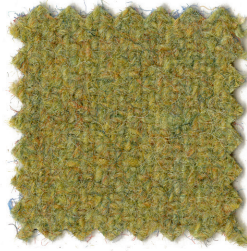
1221



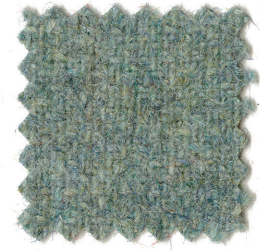
1247



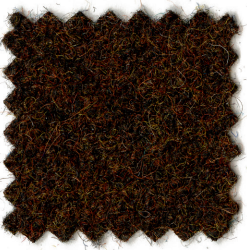
1219



1218



1244



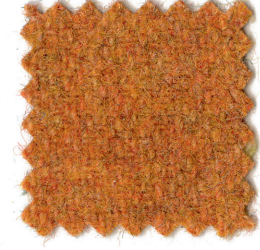
1241



1230



1209



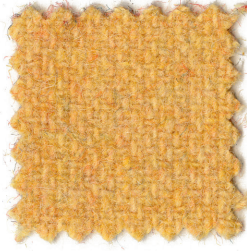
1207



1243



1242



1204





**DESTINAZIONI D'USO/ APPLICATIONS**

Rivestimenti per imbottiti, casa, ufficio e contract/  
Offices, hotels, institutions, domestic use

**RESISTENZA ALL'ABRASIONE  
(CICLI MARTINDALE)/ ABRASION RESISTANCE  
(MARTINDALE CYCLES)**

UNI EN ISO 12947-2 100.000

**RESISTENZA ALLO SFREGAMENTO/ FASTNESS  
TO RUBBING (EN ISO 105 - X12)**

Umido/ Wet 4/5  
Secco/ Dry 4/5

**RESISTENZA ALLA LUCE/ LIGHT FASTNESS  
(EN ISO 105 - B02)**

Xenotest (blue scale) 6

**PILLING METODO MARTINDALE/  
PILLING MARTINDALE METHOD**

ISO 12945-2 4

**MANUTENZIONE E PULIZIA/ MAINTENANCE  
AND CLEANING**

Usare con regolarità aspirapolvere a beccuccio  
liscio, senza spazzolare/ Use vacuum cleaner  
regularly with a smooth nozzle, without brushing

**FENICE****CARATTERISTICHE/ DESCRIPTION**

75% Lana / 25 % Poliammide (PA)

Altezza 140 cm

Peso 335 g/m<sup>2</sup>

Possono verificarsi differenze di colore

75% Wool / 25% polyamide (PA)

Height 140 cm

Weight 335 g/m<sup>2</sup>

Differences in color may occur

**ASSORBIMENTO ACUSTICO / ACOUSTIC ABSORPTION**

UNI EN ISO 354:2003

UNI EN ISO 10534-2

**INFIAMMABILITÀ/ FLAMMABILITY**

11M UNI 9175 Con schiuma standard ignifuga con  
densità 25 Kg/m<sup>3</sup>/ With standard flame retar-  
dant foam with density 25 Kg/m<sup>3</sup>

BS 5852 CRIB 5

EN 1021 -1 con schiuma standard 20/22 kg/m<sup>3</sup> /  
with standard foam 20/22 kg/m<sup>3</sup>

EN 1021 -2 con schiuma standard 20/22 kg/m<sup>3</sup> /  
with standard foam 20/22 kg/m<sup>3</sup>

TB 117:2013

5 ANNI DI GARANZIA/ 5 YEARS WARRANTY

**REVISIONE TESSUTI 05-2021/**

FABRIC REVIEW 2021-05

