

1718

 **LUXY.**

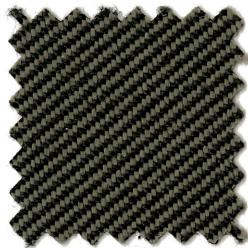
CATEGORIA D/  
CATEGORY D

TESSUTO/  
UPHOLSTERY

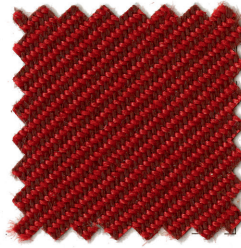
RELATE  
**kvadrat**



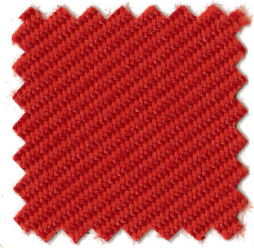
1749



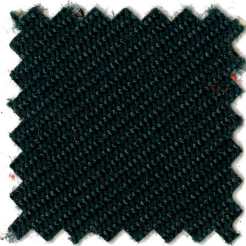
1729



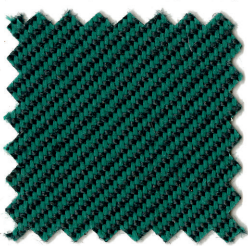
1710



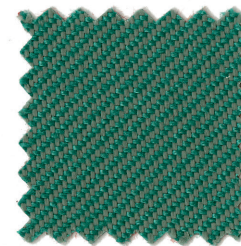
1709



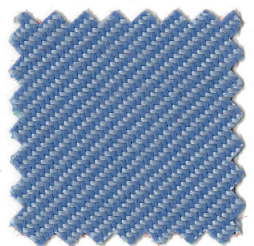
1740



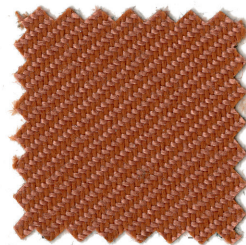
1720



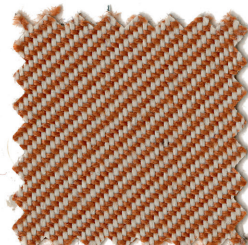
1747



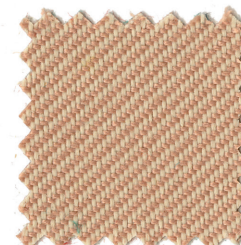
1722



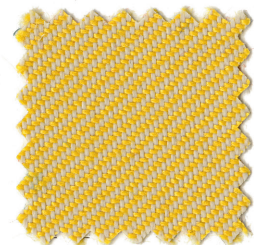
1716



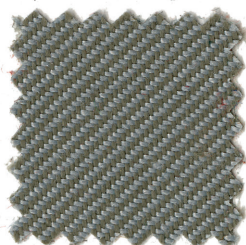
1731



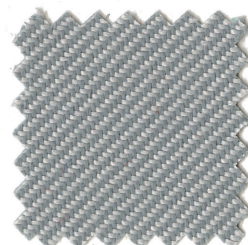
1703



1704



1727



1725





**DESTINAZIONI D'USO/ APPLICATIONS**  
Rivestimenti per imbottiti, casa, ufficio  
e contract. Alta resistenza all'abrasione/  
Offices, hotels, institutions, domestic use.

**RESISTENZA ALL'ABRASIONE**  
(CICLI MARTINDALE)/ ABRASION RESISTANCE  
(MARTINDALE CYCLES)  
EN ISO 12947-2 **80.000**

**RESISTENZA ALLO SFREGAMENTO/ FASTNESS**  
TO RUBBING (EN ISO 105 - X12)  
Umido/ Wet **4/5**  
Secco/ Dry **4/5**

**RESISTENZA ALLA LUCE/ LIGHT FASTNESS**  
(EN ISO 105 - B02) **5/7**

**PILLING**  
(EN ISO 12945-2) **4/5**

**ASSORBIMENTO ACUSTICO / ACOUSTIC ABSORPTION**  
UNI EN ISO 354:2003  
Class D (Flat) **0.45**  
Class C (Waved) **0.70**  
Flusso d'aria / Airflow  
EN 29053 **2430 Pa s/m**

**MANUTENZIONE E PULIZIA/ MAINTENANCE**  
AND CLEANING  
Aspirare frequentemente, idealmente ogni set-  
timana. Rimuovere subito le macchie quando si  
verificano con acqua calda o acqua minerale. La-  
vabile anche a 60° -80°C a mezzo carico di lavag-  
gio. Asciugatura a goccia/ Vacuum frequently,  
ideally every week. Remove stains asap they  
occur, with clean warm water or sparkling water.  
Also washable at 60-80°C, half wash load. Drip drying.



## RELATE

**CARATTERISTICHE/ DESCRIPTION**  
100% Trevira CS  
Altezza 140 cm  
Peso 321 g/m<sup>2</sup>  
Tinto in filo  
Possono verificarsi differenze di colore

100% Trevira CS  
Width 140 cm  
Weight 321 g/m<sup>2</sup>  
Yarn dyed  
Differences in color may occur

**INFIAMMABILITÀ/ FLAMMABILITY**  
AS/NZS 3837 Class 2  
ASTM E84 Class A unadhered  
ASTM E84 Class B adhered  
BS 5852 CRIB 5  
BS 5852 Part 1 con trattamento ritardante/  
with treatment  
DIN 4102 B1  
EN 1021 - 1  
EN 1021 - 2  
IMO FTP CODE 2010: Part 8  
NF D 60 013  
NF P 92 507 M1  
NFPA 701  
SN 198 898 5.2  
UNI 9177 Classe 1  
TB 117:2013  
OENORM B1/Q1

**10 ANNI DI GARANZIA/ 10 YEARS WARRANTY**

**REVISIONE TESSUTI 05-2021/  
FABRIC REVIEW 2021-05**

