



The Place for Ideas

PUZZLE

Design by Itamar Harari

Incastri e composizioni artistiche. Puzzle è un invito alla creatività. Sistema modulare poliedrico dalle linee pulite e dal tessuto liscio, è un insieme di tasselli con cui giocare per realizzare combinazioni adatte al contesto di riferimento. La sua struttura in polimero termoplastico lo rende leggero e facilmente spostabile, regalando, a colpo d'occhio, una sensazione di piacevolezza e benessere condita con un pizzico di brio, energia e modernità.

Interlocking artistic compositions. Puzzle is an open invitation to express creativity. The polyhedric modular system featuring clean lines and smooth fabrics is a set of pieces that can be combined to suit any space. In thermoplastic polymer, Puzzle is lightweight and easy to move about, lending a pleasant sense of comfort with a lively, energetic and modern touch.





PUZZLE

Modelli PZ2 E PZ3 / PZ2 and PZ3 models



PUZZLE
Modello PZ2/ PZ2 model
Dettaglio di componibilità/ Modularity detail



PUZZLE

Design by Luxy R&D
Lounge/ Lounge seating



PZ1

L 48 x W 48 x H 42 cm



PZ2

L 96 x W 48 x H 42 cm



PZ3

L 96 x W 96 x H 42 cm



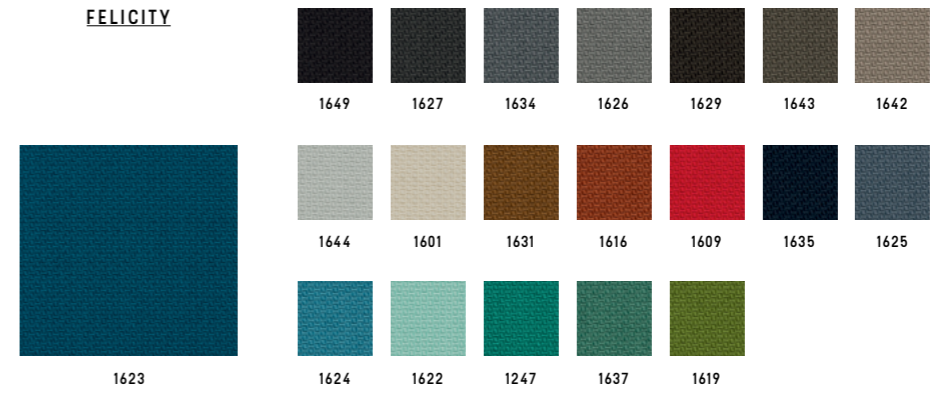
MATERIALI

MATERIALI/ MATERIALS



GABRIEL

FELICITY

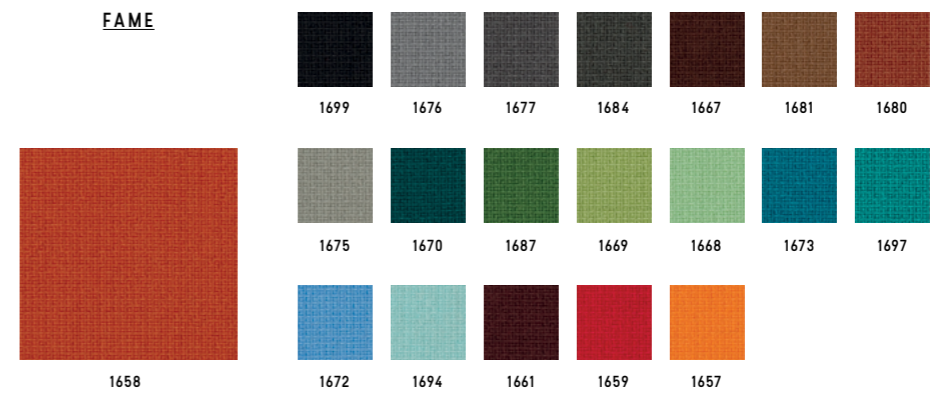


Categoria/ Category
Composizione/ Composition
Note/ Notes

C
100% polyester
100% recycled fabric



FAME



Categoria/ Category
Composizione/ Composition

D
95% New Zeland wool + 5% polyamide



BREEZE FUSION



Categoria/ Category
Composizione/ Composition

K
88% New Zeland wool + 12% polyamide



GABRIEL

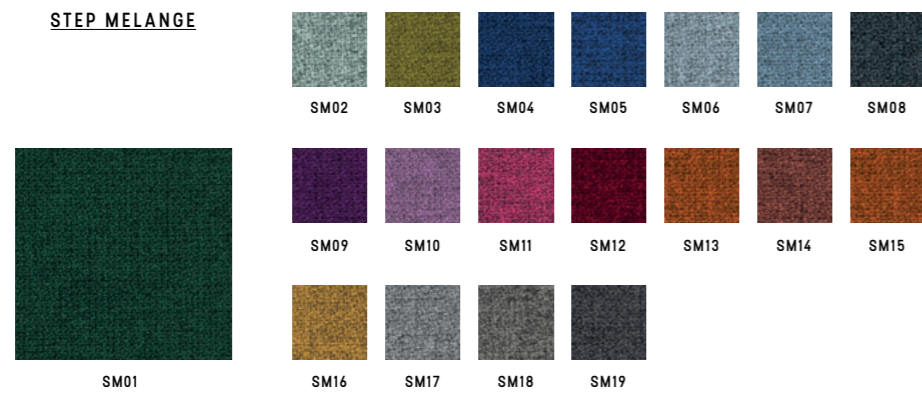
SAVOY



Categoria/ Category **K**
Composizione/ Composition **100% Trevira CS**



STEP MELANGE

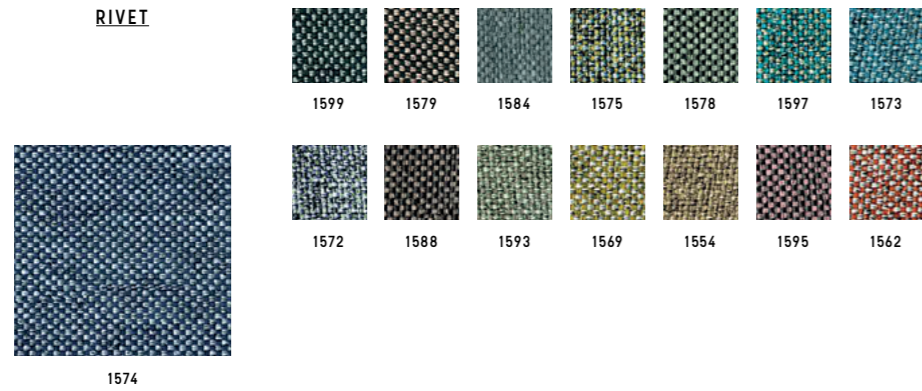


Categoria/ Category **D**
Composizione/ Composition **100% Trevira CS**



CAMIRA

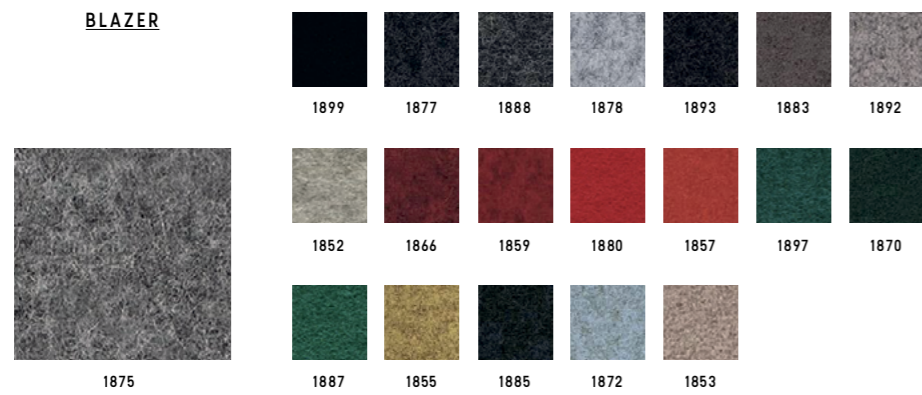
RIVET



Categoria/ Category **C**
 Composizione/ Composition 100% reprove
 Note/ Notes 100% recycled fabric



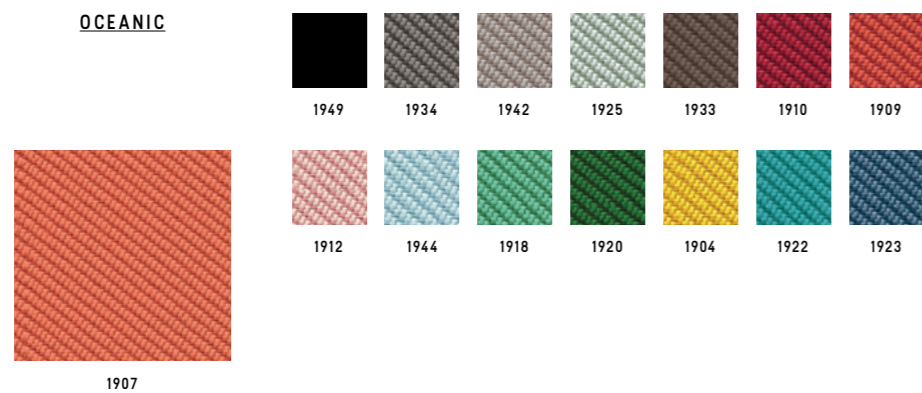
BLAZER



Categoria/ Category **K**
 Composizione/ Composition 100% virgin wool



OCEANIC



Categoria/ Category **K**
 Composizione/ Composition 100% post-consumer recycled polyester, including 50% SEAQUAL yarn



KVADRAT

RELATE



Categoria/ Category **D**
 Composizione/ Composition 100% trevira CS
 Note/ Notes 100% recycled fabric



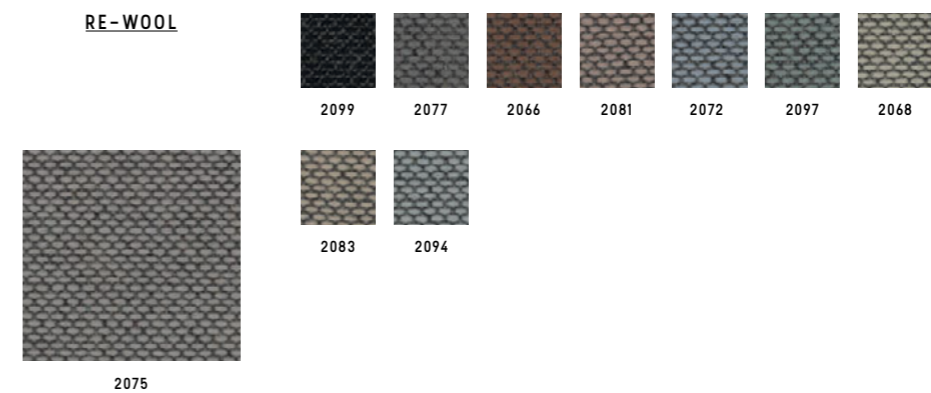
REMIX 3



Categoria/ Category **K**
 Composizione/ Composition 90% new wool worsted + 10% nylon



RE-WOOL

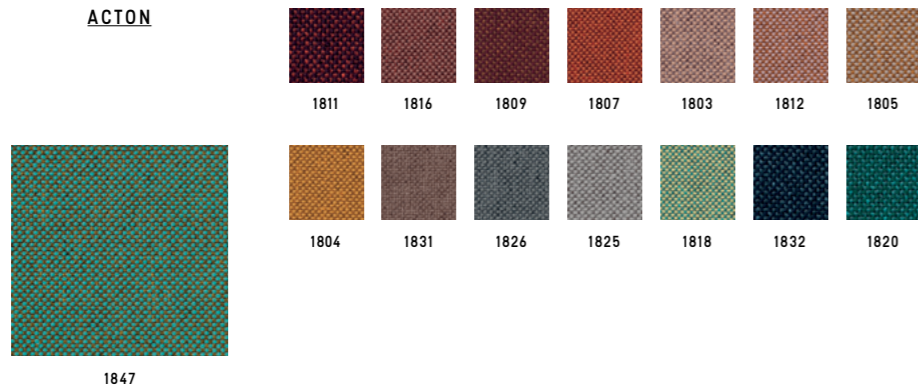


Categoria/ Category **K**
 Composizione/ Composition 45% recycled wool + 45% new wool worsted + 10% nylon



VESCOM

ACTON



Categoria/ Category **D**
 Composizione/ Composition 100% polyester



LIMONTA

TRESIGALLO



Categoria/ Category **K**
 Composizione/ Composition 22% Acrylic + 22% wool + 22% polyester
 13% cotton + 14% viscose + 17% wool



G.S.

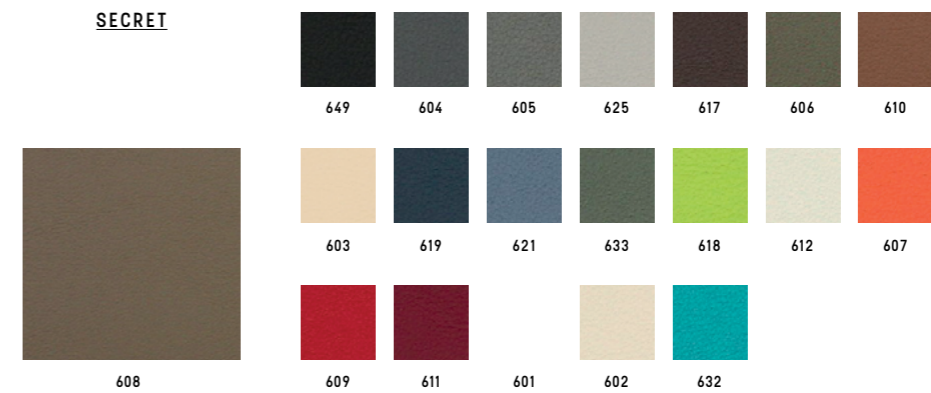
SURROUND



Categoria/ Category **B**
 Composizione/ Composition 87,5% polyvinylchloride (PVC) + 12,5% cotton
 Note/ Notes Antibacterial



SECRET



Categoria/ Category **C**
 Composizione/ Composition 76% polyvinylchloride (PVC) + 2% polyurethane (PU) + 22% polysulfone (PES)



GORGEUS

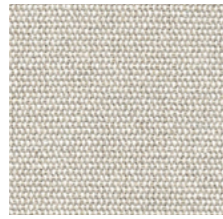


Categoria/ Category **D**
 Composizione/ Composition 100% poliestere FR



CHIOCCARELLO

DISCO COEX



1402

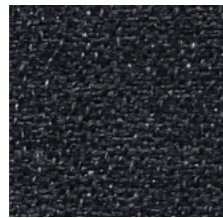


Categoria/ Category
Composizione/ Composition

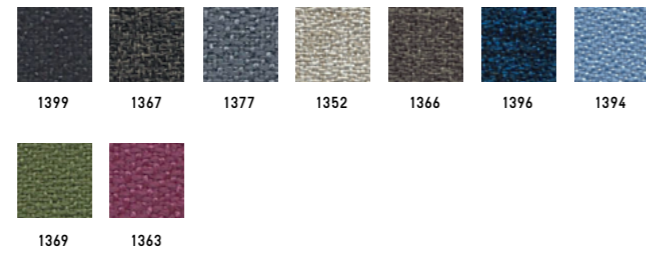
D
70% cotton + 20% acrylic + 5% viscose
5% linen, 0% formaldehyde



EXPO



1379

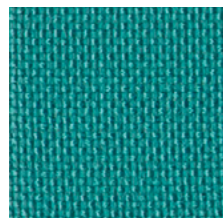


Categoria/ Category
Composizione/ Composition
Note/ Notes

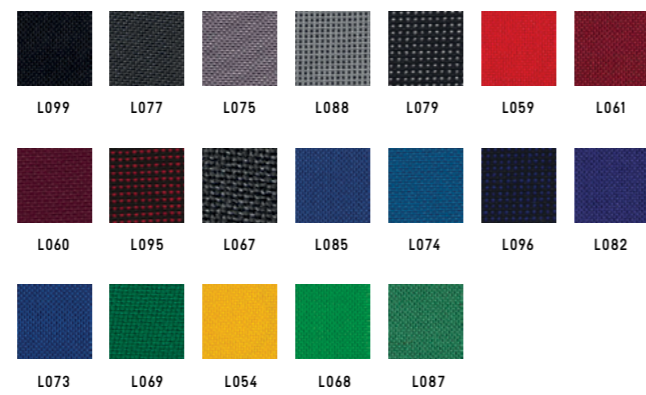
B
100% propitex Fr bacteriostatic
Bacteriostatic



MADRID



L097

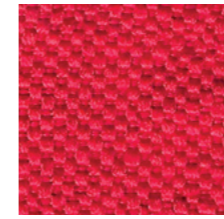


Categoria/ Category
Composizione/ Composition

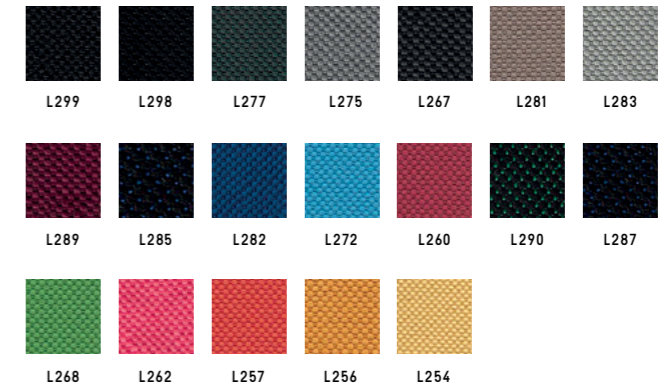
A
100% polypropilene FR



SALÒ



L259



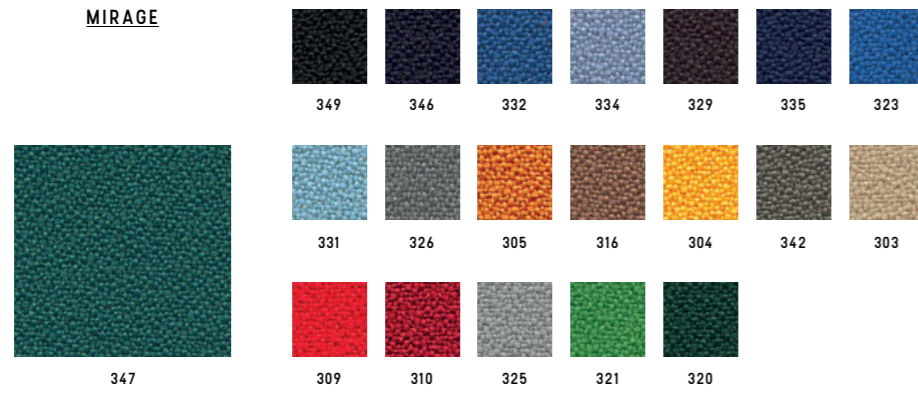
Categoria/ Category
Composizione/ Composition

B
100% polyester FR



PUGI

MIRAGE

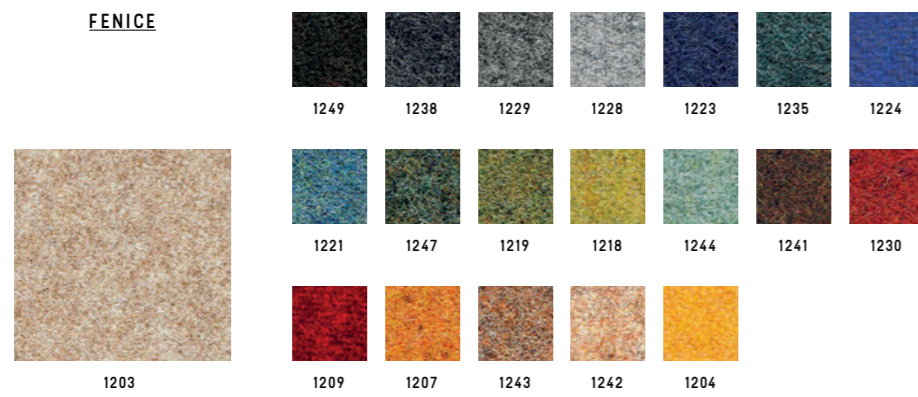


Categoria/ Category
Composizione/ Composition

B
100% polyester FR



FENICE



Categoria/ Category
Composizione/ Composition

C
75% wool + 25% polyamide



BISENTIUM



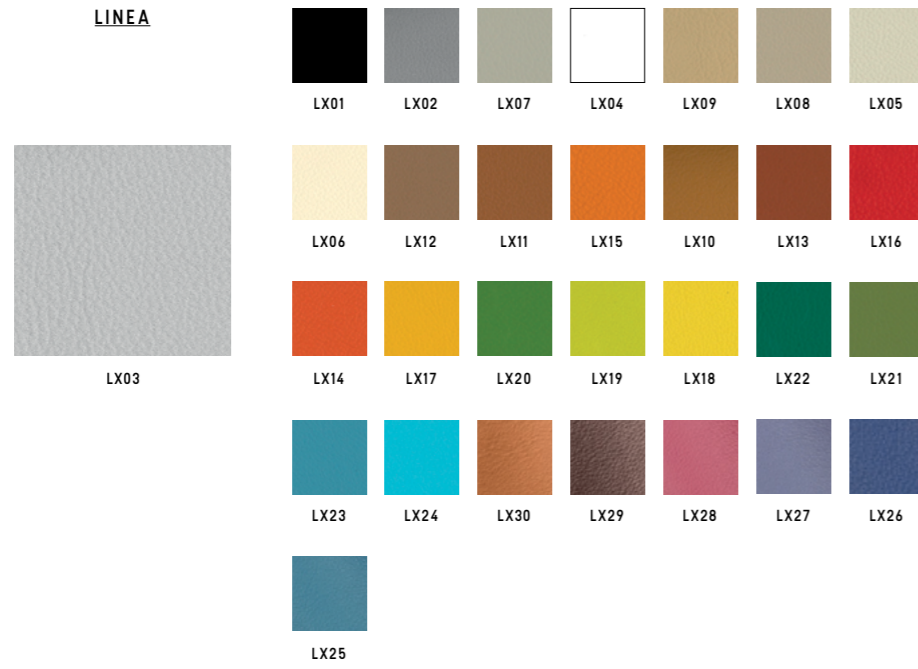
Categoria/ Category
Composizione/ Composition

K
30% wool + 28% polyester + 26% polyamide
16% silk



MASTROTTO

LINEA

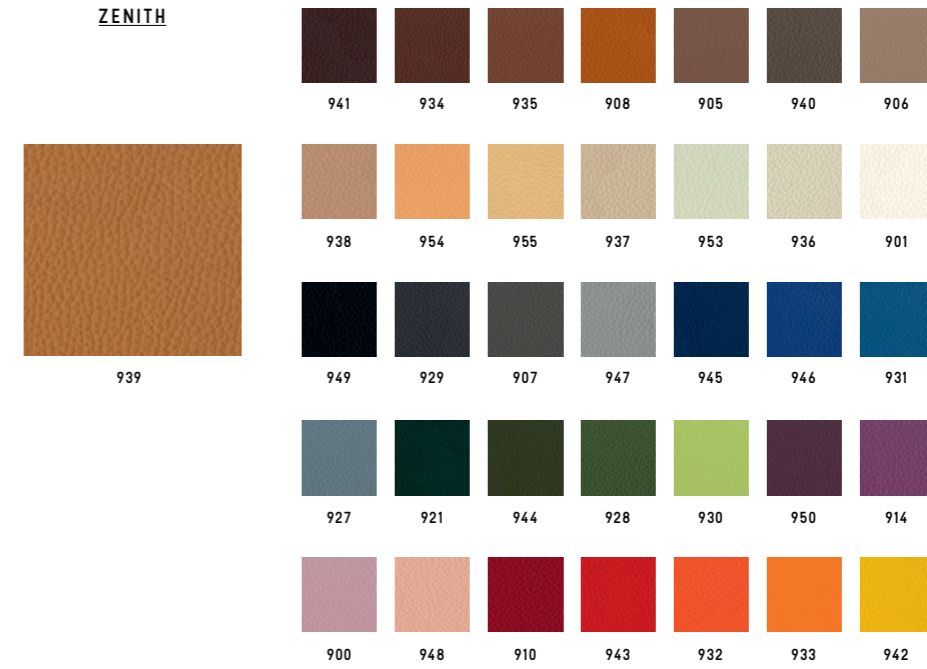


Categoria/ Category
Composizione/ Composition

TOP (pieno fiore)
Bovine leather



ZENITH



Categoria/ Category
Composizione/ Composition

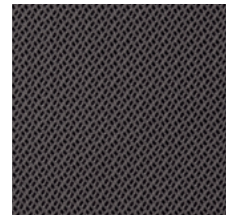
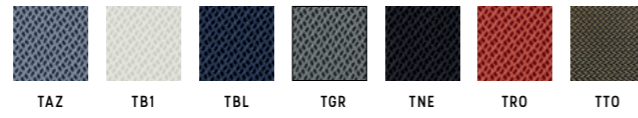
TP
Bovine leather





RETI TRIDIMENSIONALE

RHYTHM



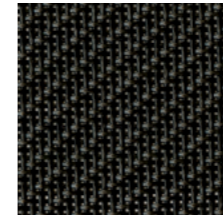
TAN

TVD

Categoria/ Category D
 Composizione/ Composition 100% polyester



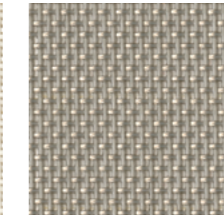
CATEGORIA L/
 CATEGORY L



849



801

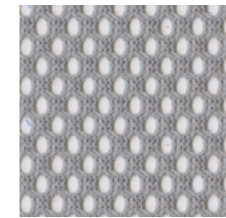


825

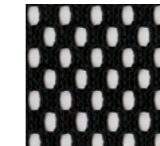
Categoria/ Category L
 Composizione/ Composition 73% PVC + 27% poliestere/ 73% PVC + 27% polyester
 849-801: Light, Nulite, Smartlight, Pop,
 825: Light, Nulite



CATEGORIA R/
 CATEGORY R



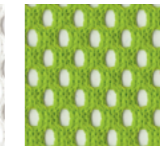
GR



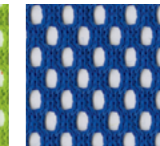
NE



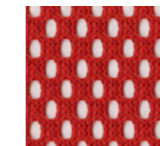
BI



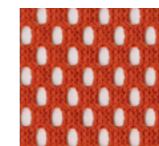
VD



BL



RO

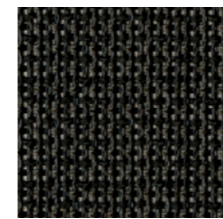


AR

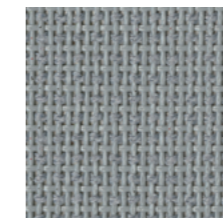
Categoria/ Category R
 Composizione/ Composition 100% poliestere/ 100% polyester
 Solo per Aire Jr, Post, Pop, Switch/
 Only for Aire Jr, Post, Pop, Switch



CATEGORIA Z/
 CATEGORY Z



NE



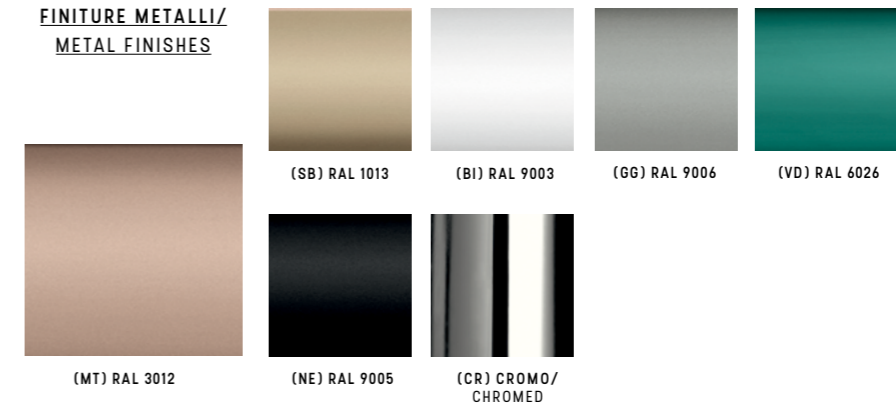
GR

Categoria/ Category Z
 Composizione/ Composition 60% PVC + 40% poliestere/ 60% PVC + 40% polyester
 Solo per Overtime Evo, Extralight/
 Only for Overtime Evo, Extralight





**FINITURE METALLI/
METAL FINISHES**



Categoria/ Category

FE

**PLASTICHE/
PLASTICS**



Categoria/ Category

PE

**LEGNO/
WOOD**



Faggio/ Beech

Rovere/ Oak

Noce/ Walnut

Wenge'

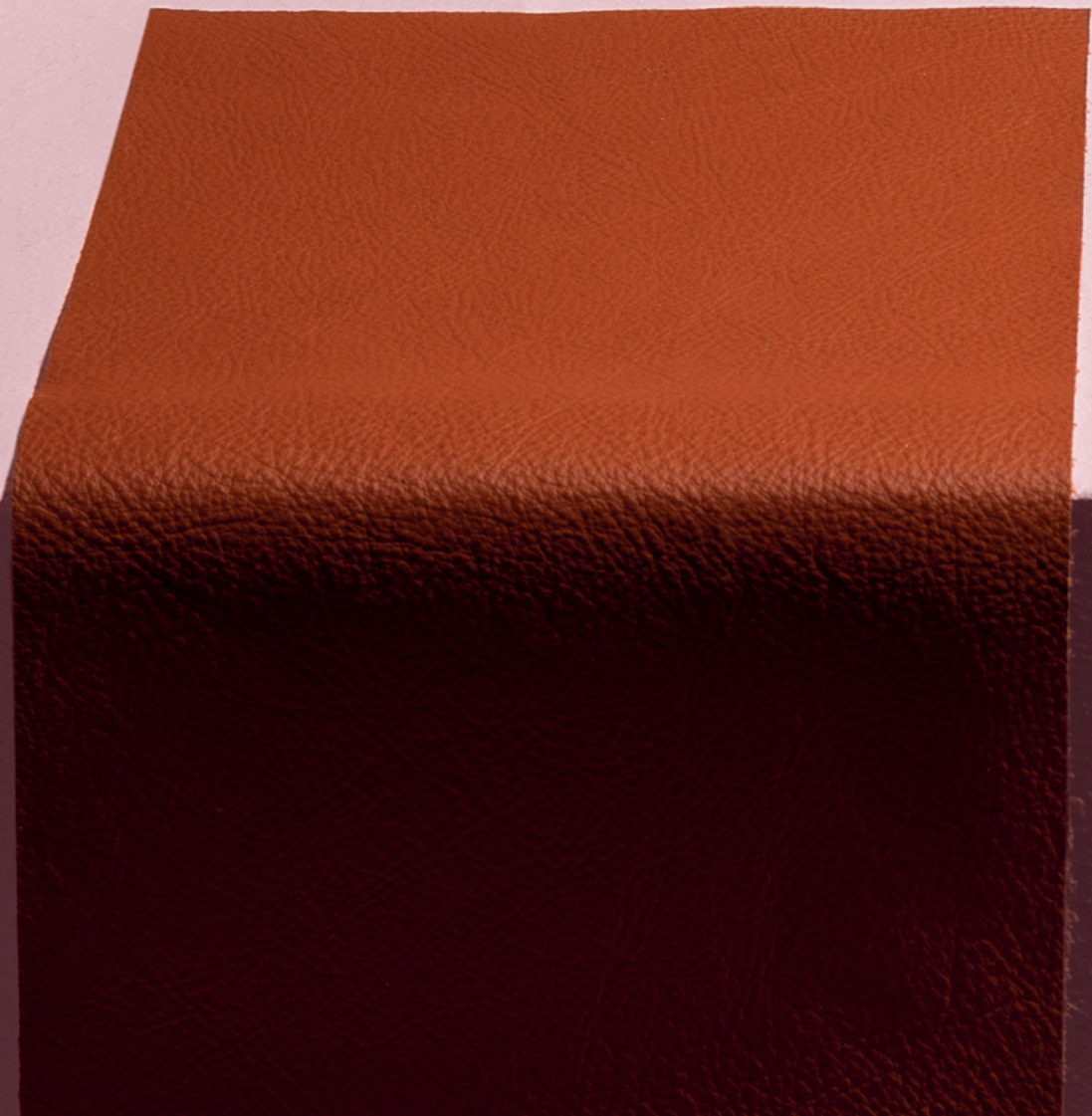
Standard

A progetto/ For customized projects

Categoria/ Category
Composizione/ Composition

LE

Legno massello di faggio in colore naturale/ Solid beech wood natural finish.
Legno massello di rovere con verniciatura di tipo acrilico in vari colori/ Solid oak wood natural finishes.



Luxy.com