



The Place for Ideas

# POP

Design by Air Design

Compostezza grintosa, freschezza dinamica. La seduta Pop è studiata per far scendere in pista la freneticità del quotidiano e la vitalità delle idee. Il sedile e lo schienale si adattano al peso di chi ne fa uso, mentre la scelta cromatica dona fisicità a quella pungente estrosità che intende esaltare. Ideata per sostenere il peso della creatività, Pop unisce semplicità e funzionalità in un'ottica di ottimizzazione delle prestazioni lavorative.

Gritty, fresh and dynamic. Pop was designed to fuel chaotic workdays and vital ideas. The seat and backrest adapt to bodyweight while the colorways express an in-your-face whimsy. Designed to support the weight of creativity, Pop brings simplicity and function together to optimize the workday.





POP  
Modelli PP8/ PP8 model



POP  
Modelli PP8 e PP7/ PP8 and PP7 models





1.



2.



3.

1. Bracciolo 4D e 3D con regolazione di profondità di 50 mm/ 4D and 3D armrest with maximum depth of 50 mm.

2. Bracciolo 2D nero con regolazione in profondità di 55 mm/ Height adjustment of 80 mm/ Black 2D armrest with 55 mm depth adjustment.

3. Regolazione in profondità di 50 mm/ Depth adjustment of 50 mm.



1. Bracciolo 1D con regolazione in altezza di 75 mm/ 1D armrest with 75 mm height adjustment.

2. Oscillazione schienale di 20°/ Backrest oscillation of 20°

3. Bracciolo 4D e 3D con inclinazione a rotazione max di 40 mm/ 3D and 4D armrest with maximum inclination by rotation of 40 mm.



1.



2.



3.

1. Meccanismo automatico sincronizzato con regolatore tensione e traslatore/ Automatic synchronized mechanism with tension adjustment and sliding seat.

2. Automatico sincronizzato con regolatore di tensione a 3 intensità, 4 posizioni di blocco con funzione anti-shock e traslatore del sedile/ Synchronized automatic mechanism with 3 tension adjustment intensity, 4 locking positions with anti-shock function and depth adjustment of the seat.

3. Regolazione del supporto lombare 30 mm/ Lumbar support 30 mm.





## POP

Design by Luxy R&D  
Sedute Operative/ Task chairs



PP4

L 67 x W 67 x H 121 cm



PP5/14

L 67 x W 67 x H 101 cm



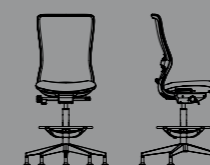
PP6

L 67 x W 67 x H 101 cm



PP17

L 67 x W 67 x H 125 cm



PP19

L 67 x W 67 x H 125 cm



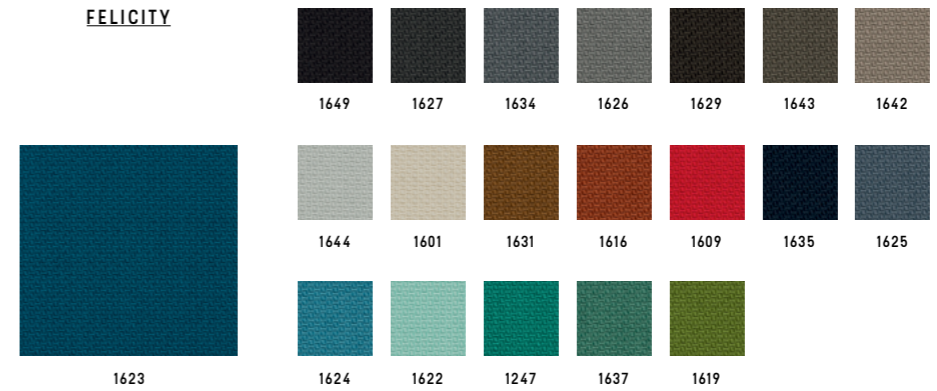
**MATERIALI**

MATERIALI/ MATERIALS



**GABRIEL**

**FELICITY**

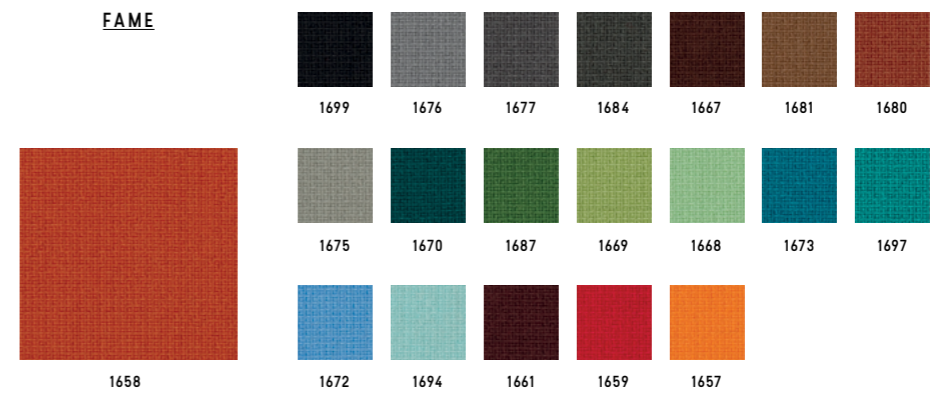


Categoria/ Category  
Composizione/ Composition  
Note/ Notes

C  
100% polyester  
100% recycled fabric



**FAME**



Categoria/ Category  
Composizione/ Composition

D  
95% New Zeland wool + 5% polyamide



**BREEZE FUSION**



Categoria/ Category  
Composizione/ Composition

K  
88% New Zeland wool + 12% polyamide



GABRIEL

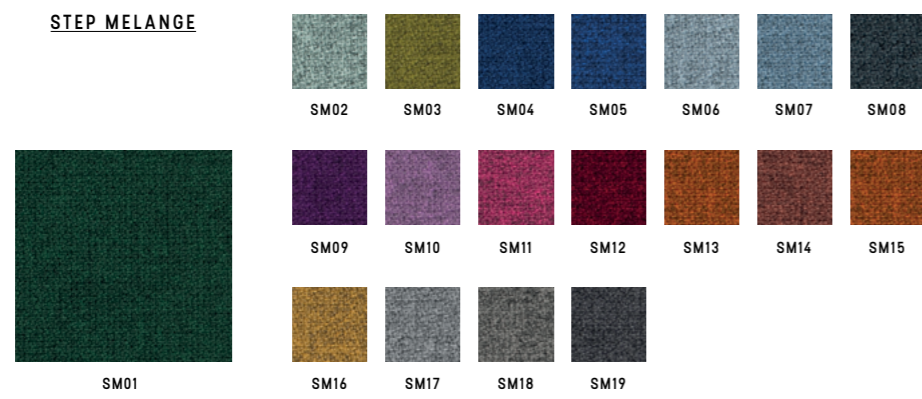
SAVOY



Categoria/ Category K  
Composizione/ Composition 100% Trevira CS



STEP MELANGE

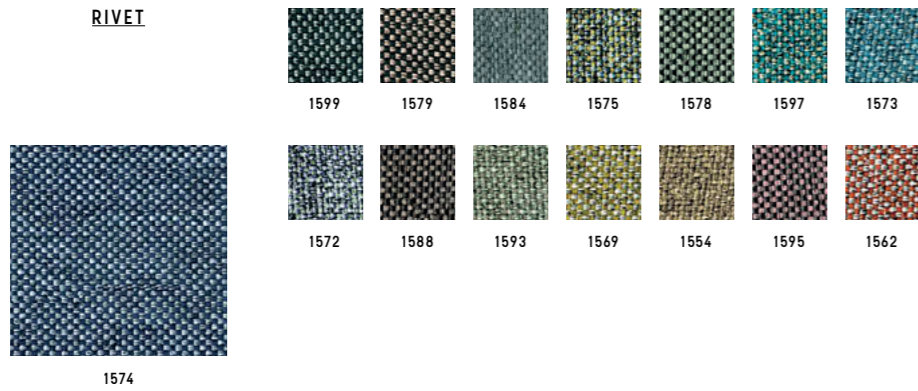


Categoria/ Category D  
Composizione/ Composition 100% Trevira CS




**CAMIRA**

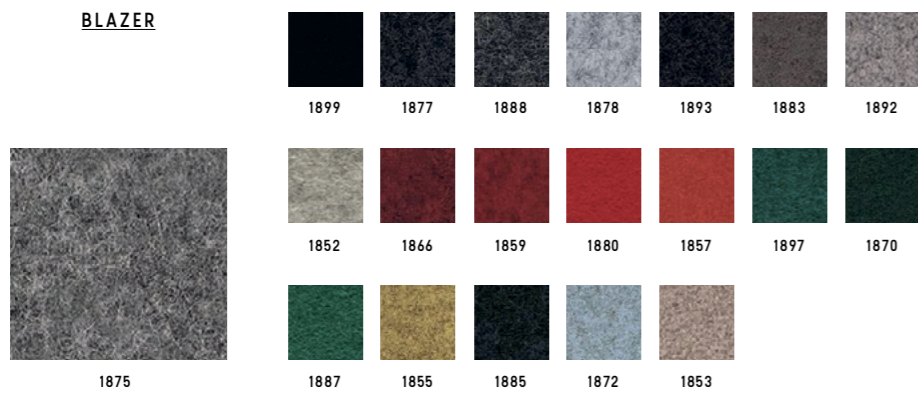
**RIVET**




Categoria/ Category **C**  
 Composizione/ Composition 100% reprove  
 Note/ Notes 100% recycled fabric

 FLAME RETARDANT

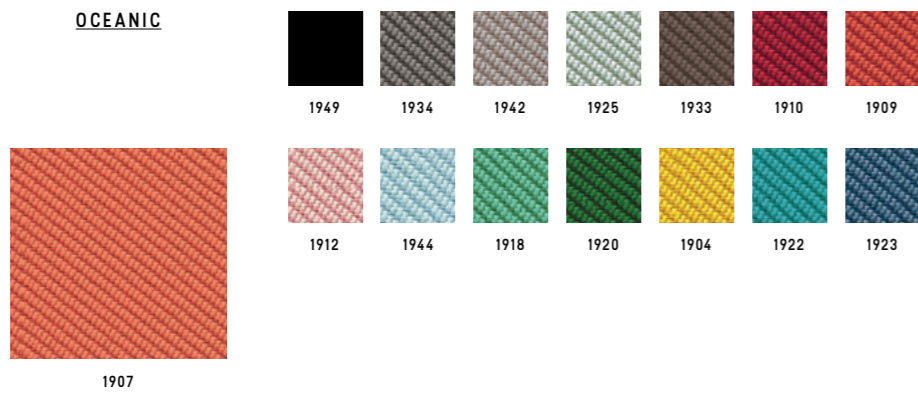
**BLAZER**




Categoria/ Category **K**  
 Composizione/ Composition 100% virgin wool

 FLAME RETARDANT

**OCEANIC**



Categoria/ Category **K**  
 Composizione/ Composition 100% post-consumer recycled polyester, including 50% SEAQUAL yarn

 FLAME RETARDANT

**KVADRAT**

**RELATE**




Categoria/ Category **D**  
 Composizione/ Composition 100% trevira CS  
 Note/ Notes 100% recycled fabric

 FLAME RETARDANT

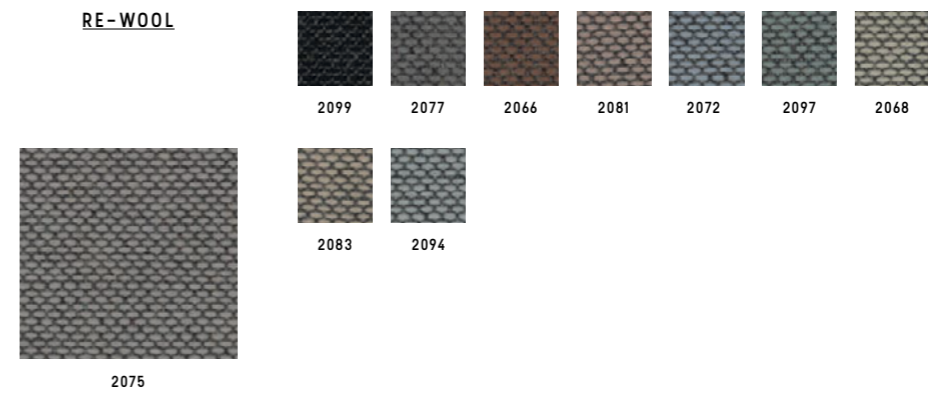
**REMIX 3**




Categoria/ Category **K**  
 Composizione/ Composition 90% new wool worsted + 10% nylon

 FLAME RETARDANT

**RE-WOOL**

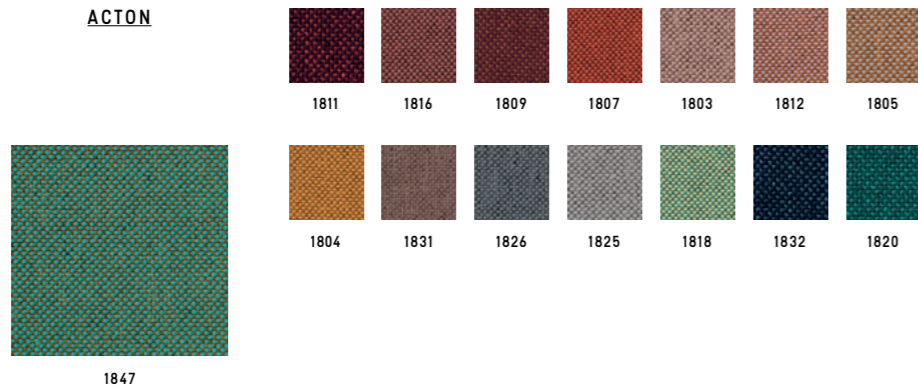


Categoria/ Category **K**  
 Composizione/ Composition 45% recycled wool + 45% new wool worsted + 10% nylon

 FLAME RETARDANT

**VESCOM**

**ACTON**



Categoria/ Category **D**  
 Composizione/ Composition 100% polyester



**LIMONTA**

**TRESIGALLO**



Categoria/ Category **K**  
 Composizione/ Composition 22% Acrylic + 22% wool + 22% polyester  
 13% cotton + 14% viscose + 17% wool



**G.S.**

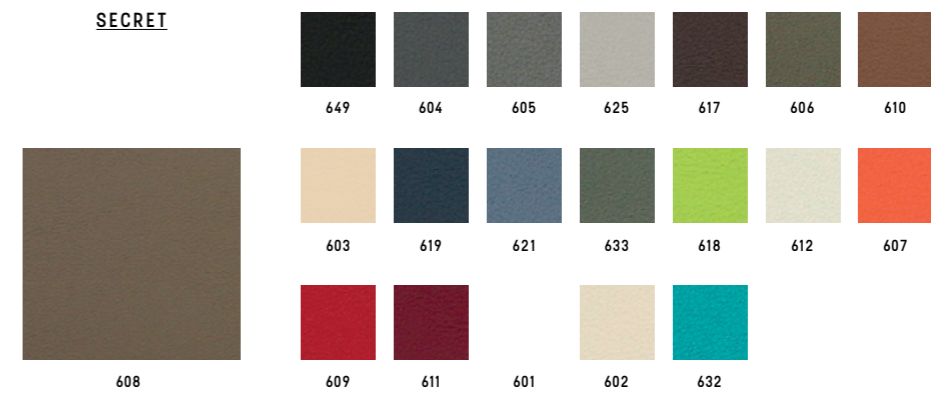
**SURROUND**



Categoria/ Category **B**  
 Composizione/ Composition 87,5% polyvinylchloride (PVC) + 12,5% cotton  
 Note/ Notes Antibacterial



**SECRET**



Categoria/ Category **C**  
 Composizione/ Composition 76% polyvinylchloride (PVC) + 2% polyurethane (PU) + 22% polysulfone (PES)



**GORGEUS**

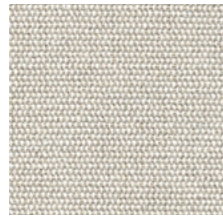


Categoria/ Category **D**  
 Composizione/ Composition 100% poliestere FR

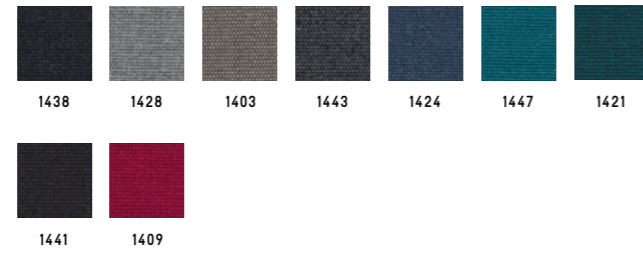


**CHIOCCARELLO**

**DISCO COEX**



1402



Categoria/ Category  
Composizione/ Composition

D  
70% cotton + 20% acrylic + 5% viscose  
5% linen, 0% formaldehyde



**EXPO**



1379

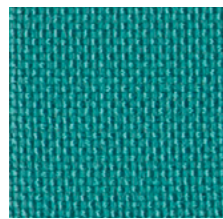


Categoria/ Category  
Composizione/ Composition  
Note/ Notes

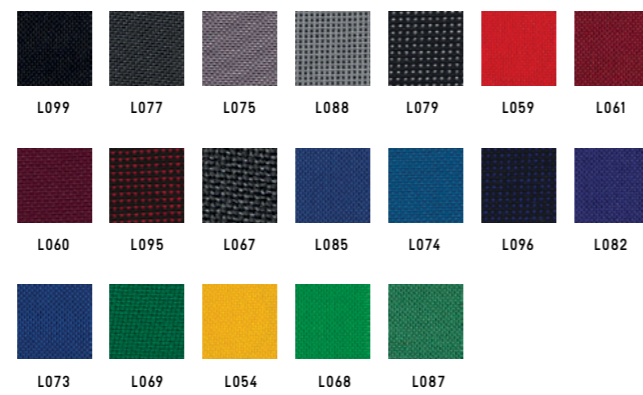
B  
100% propitex Fr bacteriostatic  
Bacteriostatic



**MADRID**



L097

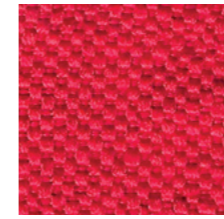


Categoria/ Category  
Composizione/ Composition

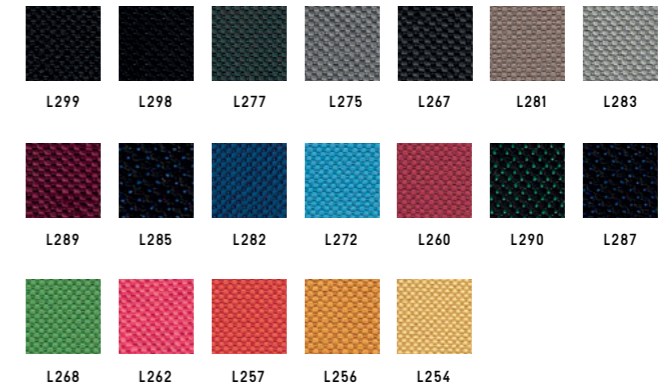
A  
100% polypropilene FR



**SALÒ**



L259



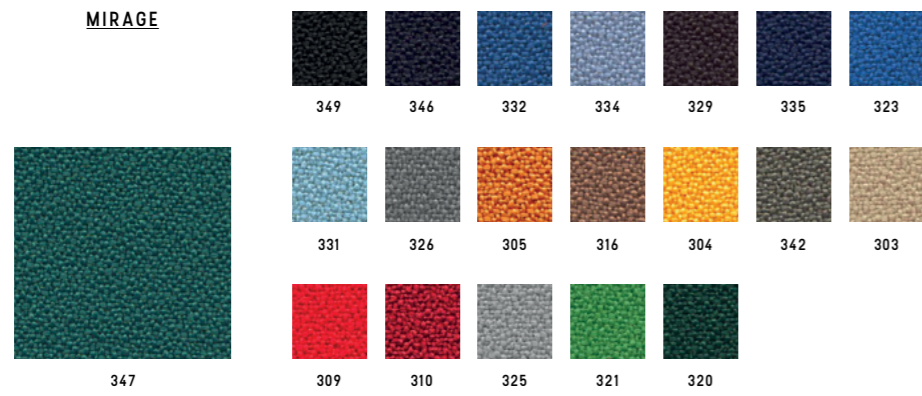
Categoria/ Category  
Composizione/ Composition

B  
100% polyester FR



**PUGI**

**MIRAGE**

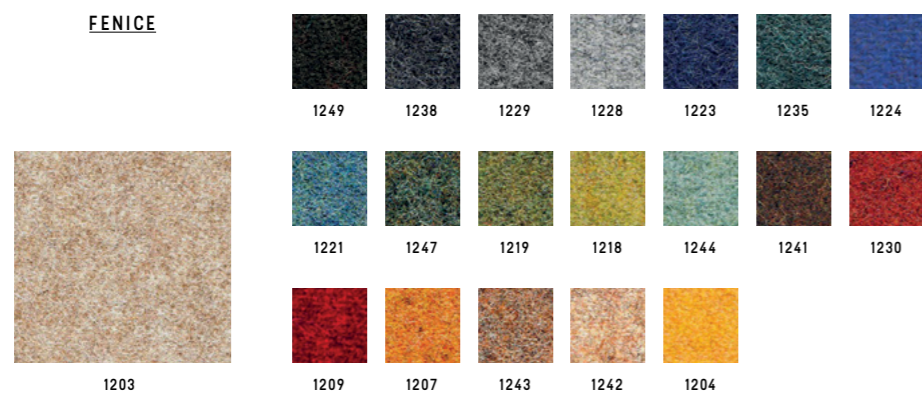


Categoria/ Category  
Composizione/ Composition

**B**  
100% polyester FR



**FENICE**



Categoria/ Category  
Composizione/ Composition

**C**  
75% wool + 25% polyamide



**BISENTIUM**



Categoria/ Category  
Composizione/ Composition

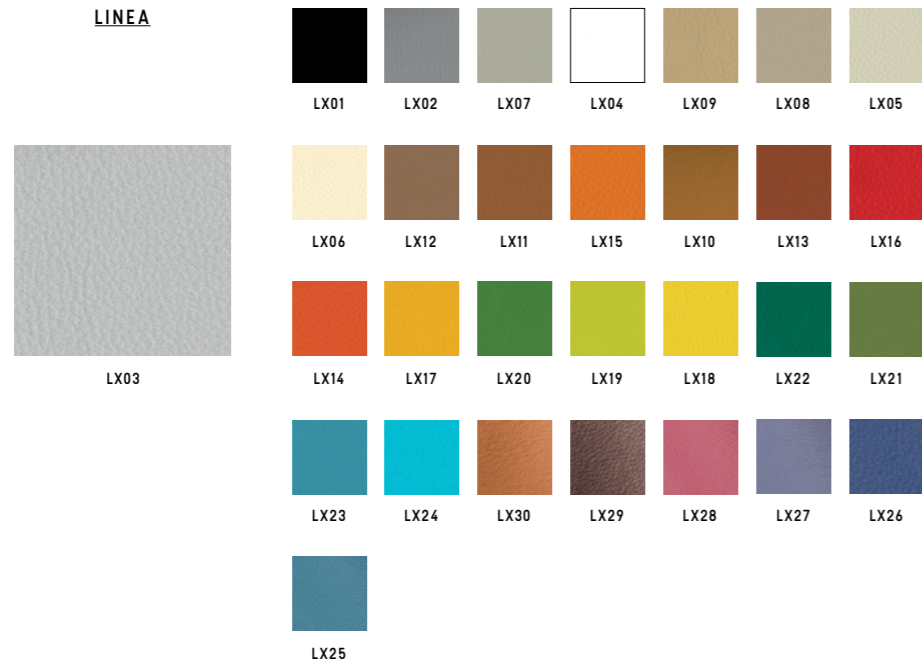
**K**  
30% wool + 28% polyester + 26% polyamide  
16% silk





**MASTROTTO**

**LINEA**

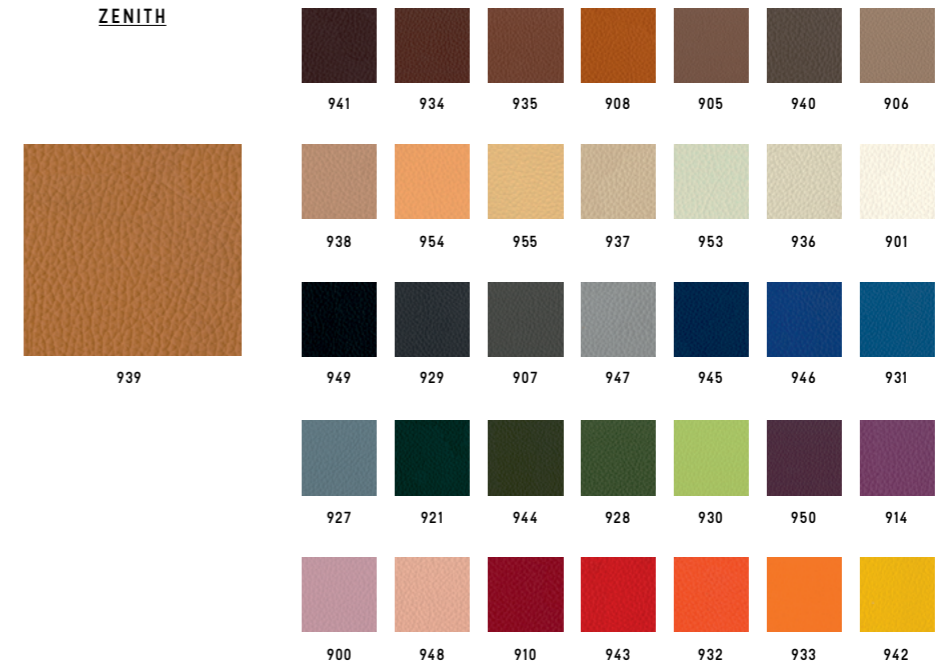


Categoria/ Category  
Composizione/ Composition

TOP (pieno fiore)  
Bovine leather



**ZENITH**



Categoria/ Category  
Composizione/ Composition

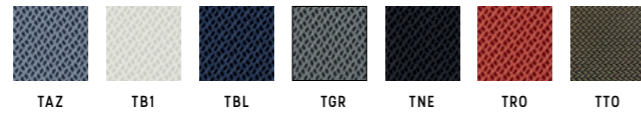
TP  
Bovine leather



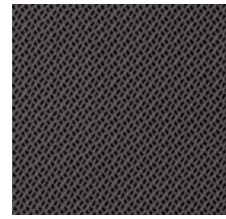


RETI TRIDIMENSIONALE

RHYTHM



TAZ TBI TBL TGR TNE TRO TTO



TAN

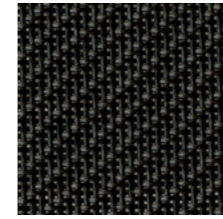


TVD

Categoria/ Category D  
 Composizione/ Composition 100% polyester



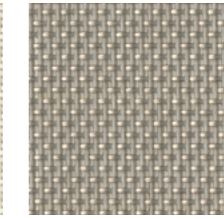
CATEGORIA L/  
 CATEGORY L



849



801



825

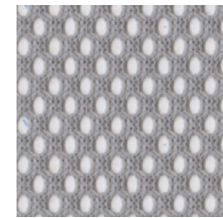
Categoria/ Category L  
 Composizione/ Composition 73% PVC + 27% poliestere/ 73% PVC + 27% polyester  
 849-801: Light, Nulite, Smartlight, Pop,  
 825: Light, Nulite



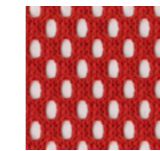
CATEGORIA R/  
 CATEGORY R



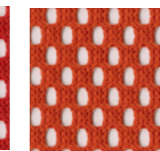
NE BI VD BL



GR



RO



AR

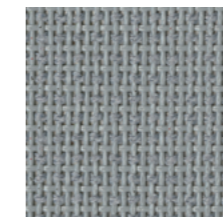
Categoria/ Category R  
 Composizione/ Composition 100% poliestere/ 100% polyester  
 Solo per Aire Jr, Post, Pop, Switch/  
 Only for Aire Jr, Post, Pop, Switch



CATEGORIA Z/  
 CATEGORY Z



NE



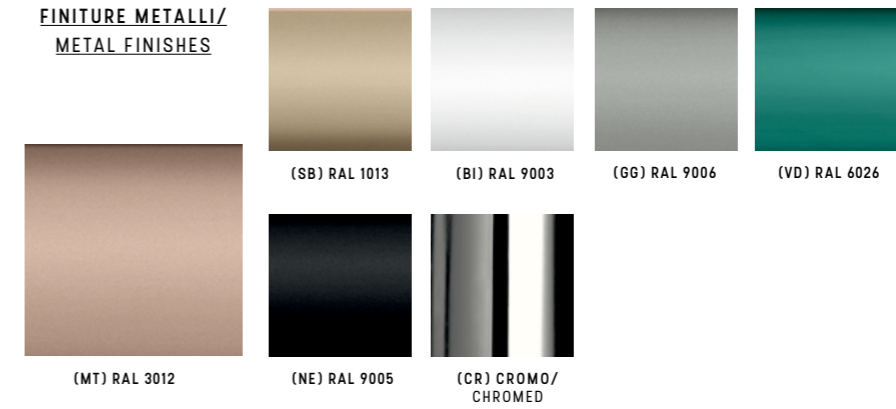
GR

Categoria/ Category Z  
 Composizione/ Composition 60% PVC + 40% poliestere/ 60% PVC + 40% polyester  
 Solo per Overtime Evo, Extralight/  
 Only for Overtime Evo, Extralight





**FINITURE METALLI/  
METAL FINISHES**



Categoria/ Category **FE**

**PLASTICHE/  
PLASTICS**



Categoria/ Category **PE**

**LEGNO/  
WOOD**



Faggio/ Beech

Rovere/ Oak

Noce/ Walnut

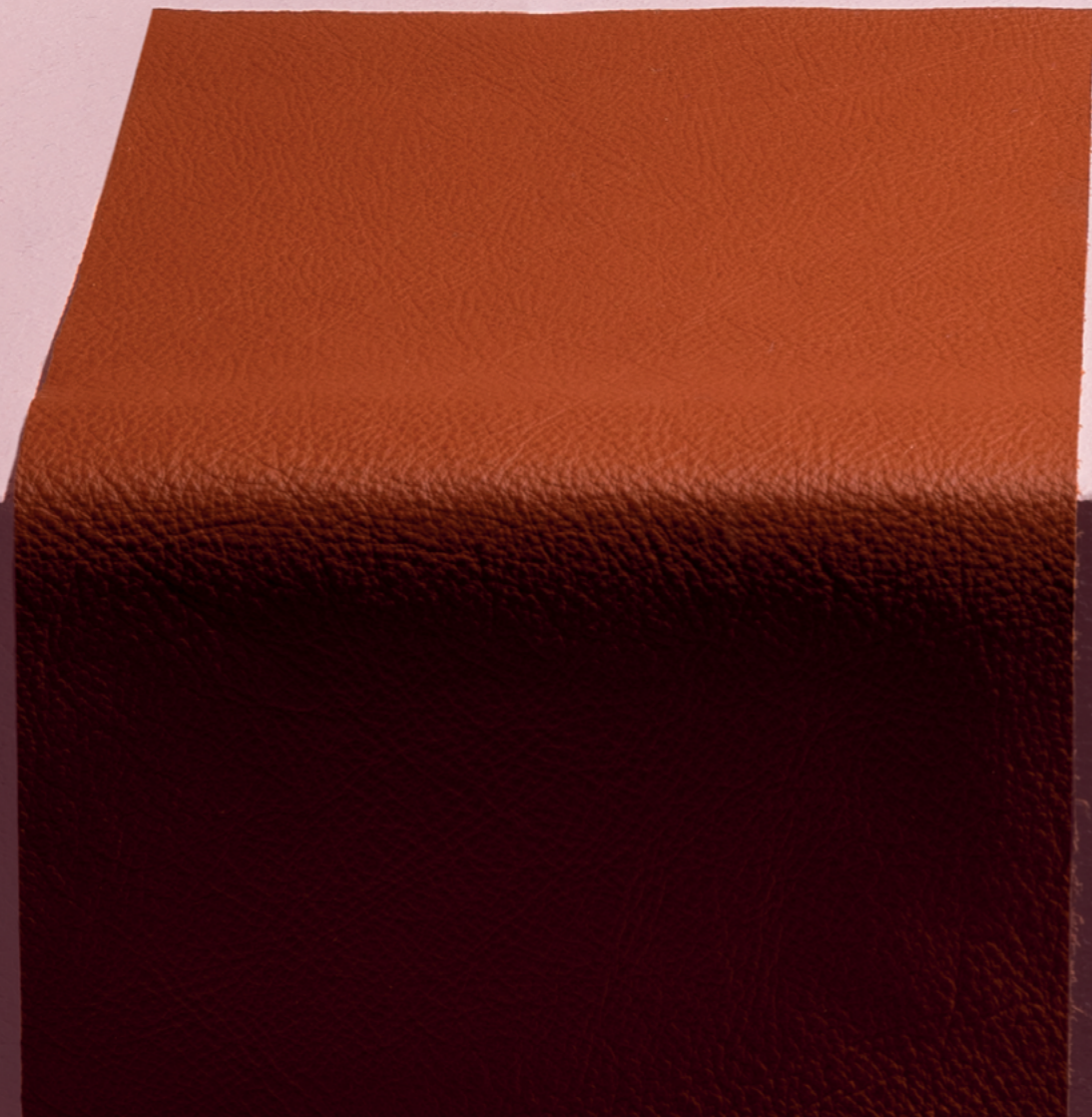
Wenge'

**Standard**

**A progetto/ For customized projects**

Categoria/ Category  
Composizione/ Composition

**LE**  
Legno massello di faggio in colore naturale/ Solid beech wood natural finish.  
Legno massello di rovere con verniciatura di tipo acrilico in vari colori/ Solid oak wood natural finishes.



[Luxy.com](http://Luxy.com)