



The Place for Ideas

# ONE

Design by Luxy R&D

Raffinata unicità per una collezione che esalta la tradizione manifatturiera. One è la seduta realizzata in pelle con cui arredare la propria postazione di lavoro. Disponibile in versione dirigenziale e visitatore, è impreziosita da dettagli sartoriali e cuciture a vista che ne valorizzano la bellezza estetica e funzionale. Le imbottiture regalano alla seduta un'aria maestosa e danno la percezione, a chi ne fa uso, di concedersi una pausa di piacere nella dinamicità del quotidiano.

A refined and unique design in an homage to traditional manufacturing, One brings leather back into the workplace. Available in two versions—executive and guest—the chair features sartorial detailing and visible seams to highlight its aesthetic and functional beauty. The chair's padding adds a majestic air while allowing those who use it to take a break during a dynamic workday.





**ONE**  
Dettagli meccanismi e schienale/  
Mechanisms and backrest details





ONE

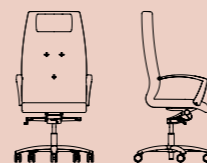
Dettaglio bracciolo rivestito/ Upholstered armrest detail



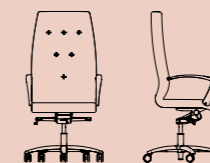


**ONE**

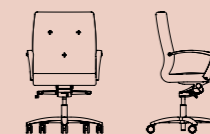
Design by Luxy R&D  
Sedute direzionali/ Executive chairs

**ON1**

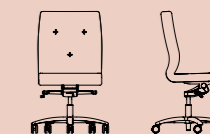
L 66 x W 67 x H 118 cm

**ON2**

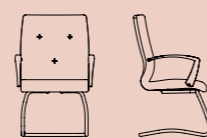
L 66 x W 67 x H 118 cm

**ON3**

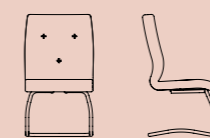
L 66 x W 67 x H 93 cm

**ON4**

L 66 x W 67 x H 93 cm

**ON5**

L 61 x W 59 x H 96 cm

**ON6**

L 57 x W 59 x H 96 cm

**MATERIALI**

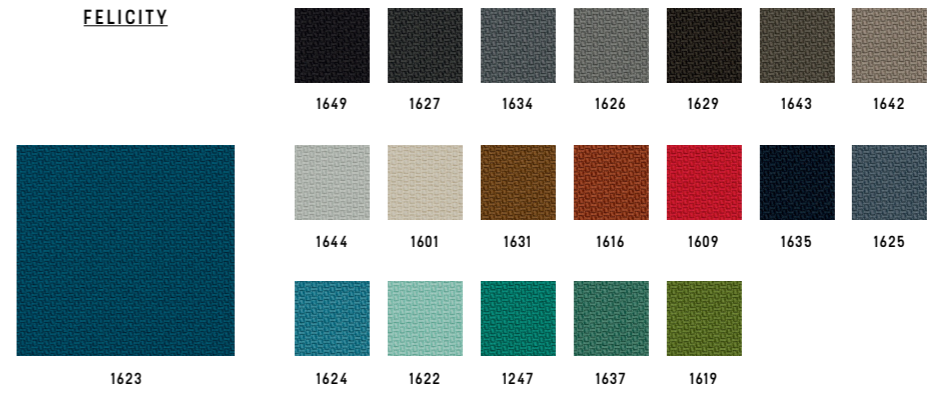
MATERIALI/ MATERIALS





**GABRIEL**

**FELICITY**

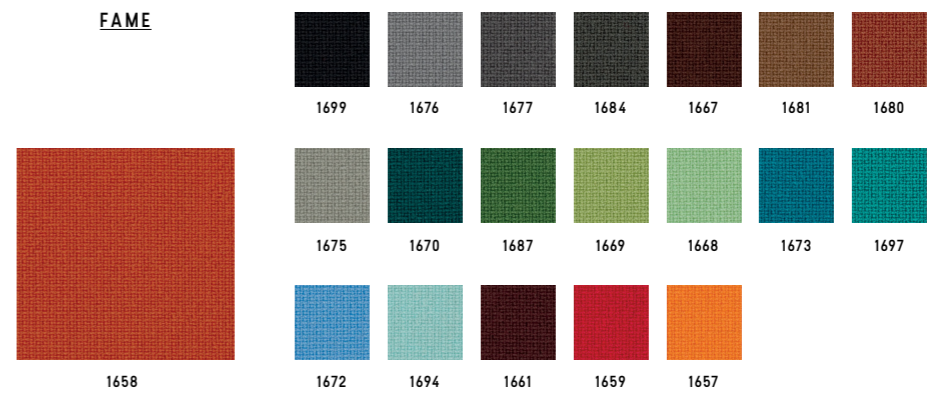


Categoria/ Category  
 Composizione/ Composition  
 Note/ Notes

C  
 100% polyester  
 100% recycled fabric



**FAME**

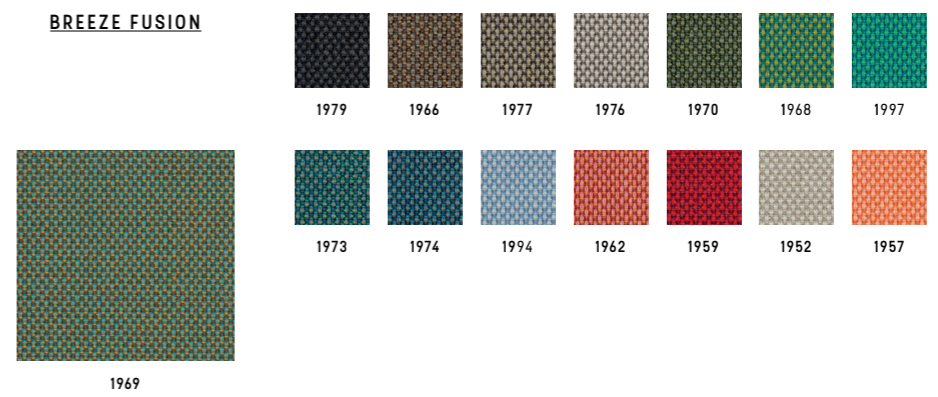


Categoria/ Category  
 Composizione/ Composition

D  
 95% New Zeland wool + 5% polyamide



**BREEZE FUSION**



Categoria/ Category  
 Composizione/ Composition

K  
 88% New Zeland wool + 12% polyamide



**GABRIEL**

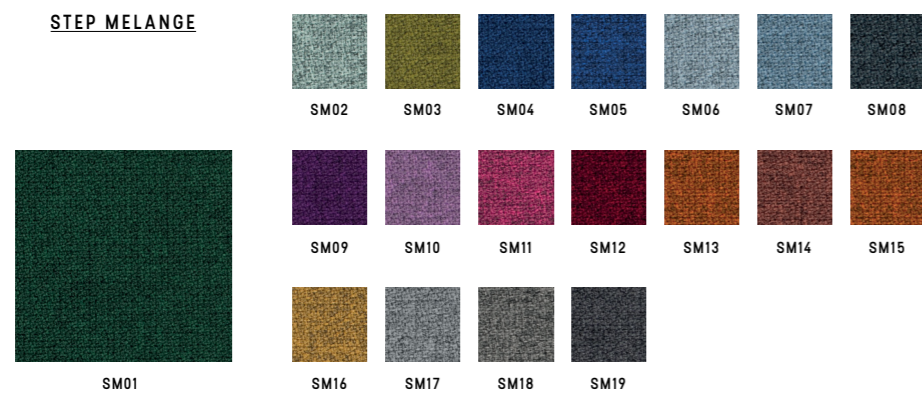
**SAVOY**



Categoria/ Category **K**  
Composizione/ Composition **100% Trevira CS**



**STEP MELANGE**

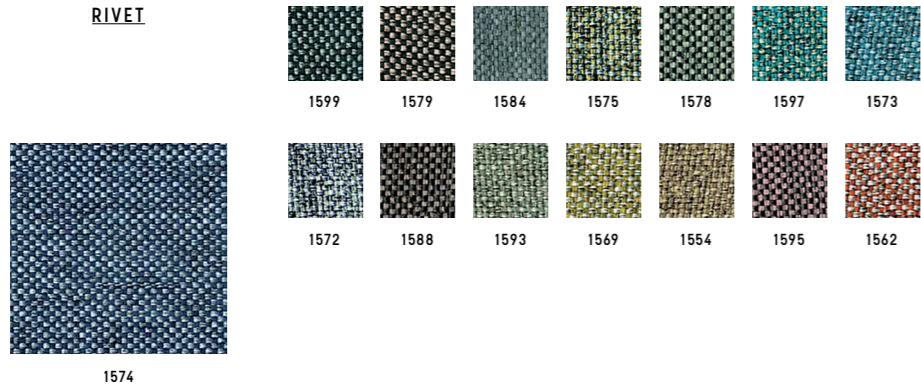


Categoria/ Category **D**  
Composizione/ Composition **100% Trevira CS**



**CAMIRA**

**RIVET**



Categoria/ Category **C**  
 Composizione/ Composition 100% reprove  
 Note/ Notes 100% recycled fabric



**KVADRAT**

**RELATE**



Categoria/ Category **D**  
 Composizione/ Composition 100% trevira CS  
 Note/ Notes 100% recycled fabric



**BLAZER**



Categoria/ Category **K**  
 Composizione/ Composition 100% virgin wool



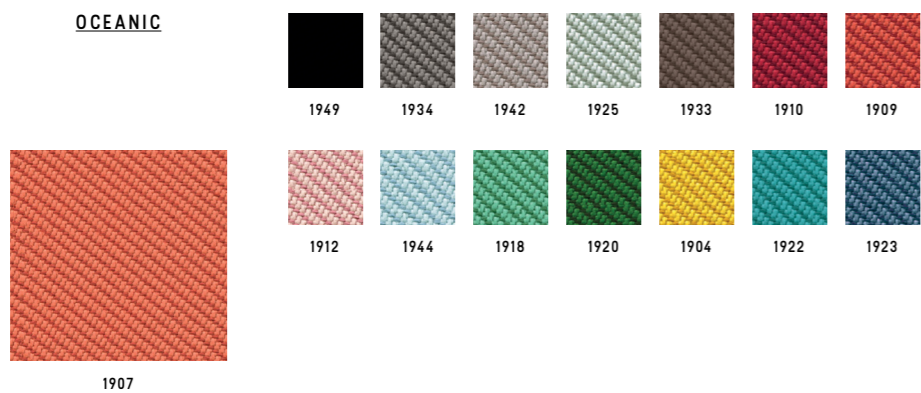
**REMIX 3**



Categoria/ Category **K**  
 Composizione/ Composition 90% new wool worsted + 10% nylon



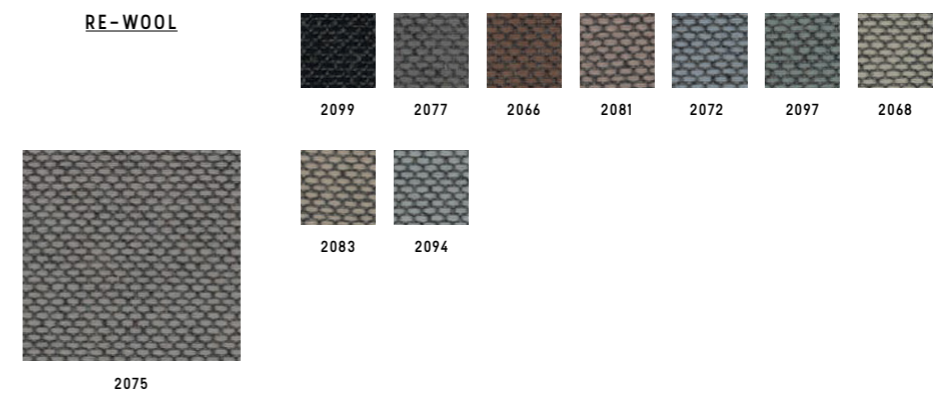
**OCEANIC**



Categoria/ Category **K**  
 Composizione/ Composition 100% post-consumer recycled polyester, including 50% SEAQUAL yarn



**RE-WOOL**

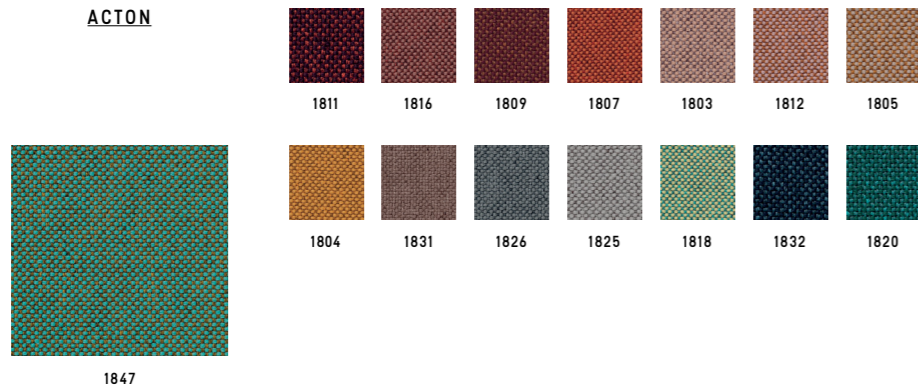


Categoria/ Category **K**  
 Composizione/ Composition 45% recycled wool + 45% new wool worsted + 10% nylon



**VESCOM**

**ACTON**



Categoria/ Category **D**  
 Composizione/ Composition 100% polyester



**LIMONTA**

**TRESIGALLO**



Categoria/ Category **K**  
 Composizione/ Composition 22% Acrylic + 22% wool + 22% polyester  
 13% cotton + 14% viscose + 17% wool



**G.S.**

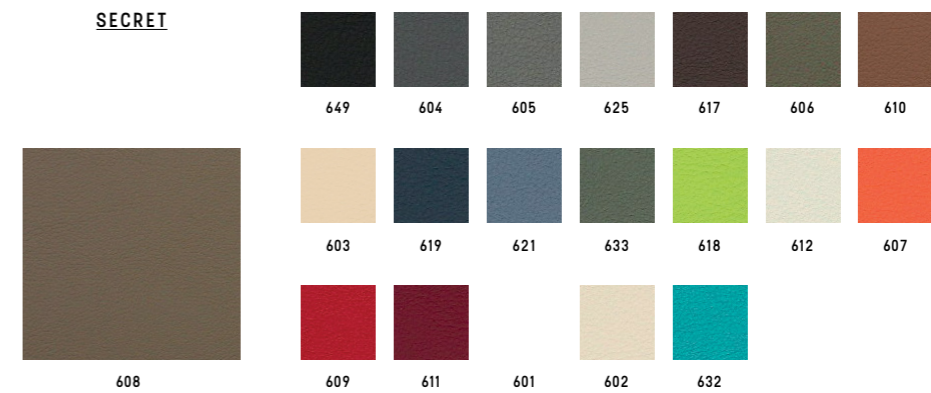
**SURROUND**



Categoria/ Category **B**  
 Composizione/ Composition 87,5% polyvinylchloride (PVC) + 12,5% cotton  
 Note/ Notes Antibacterial



**SECRET**



Categoria/ Category **C**  
 Composizione/ Composition 76% polyvinylchloride (PVC) + 2% polyurethane (PU) + 22% polysulfone (PES)



**GORGEUS**

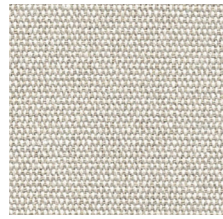


Categoria/ Category **D**  
 Composizione/ Composition 100% poliestere FR

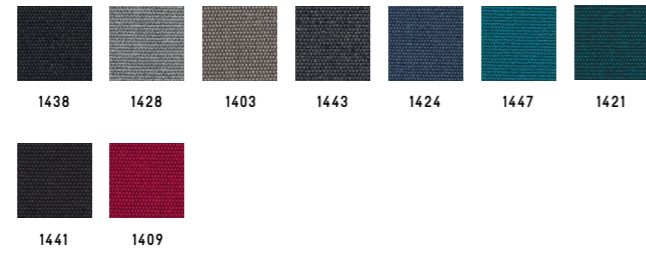


**CHIOCCARELLO**

**DISCO COEX**



1402

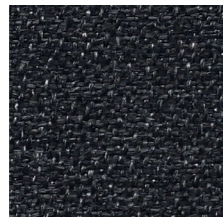


Categoria/ Category  
Composizione/ Composition

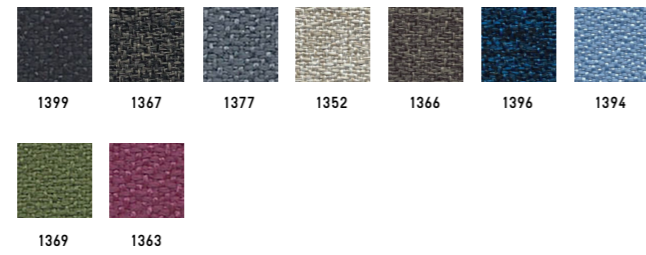
D  
70% cotton + 20% acrylic + 5% viscose  
5% linen, 0% formaldehyde



**EXPO**



1379

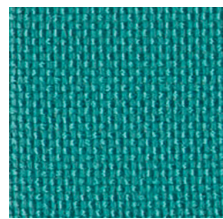


Categoria/ Category  
Composizione/ Composition  
Note/ Notes

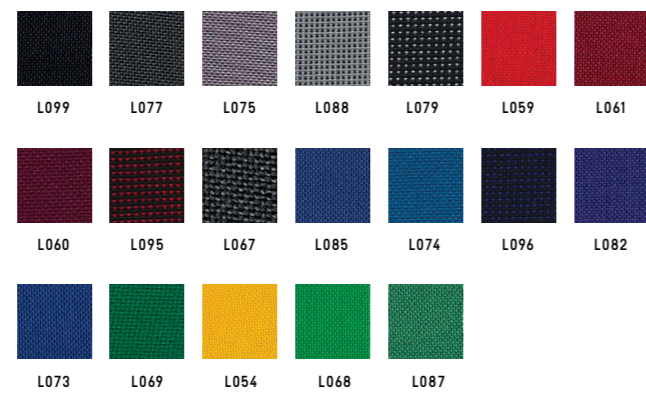
B  
100% propitex Fr bacteriostatic  
Bacteriostatic



**MADRID**



L097

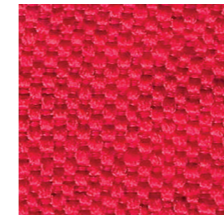


Categoria/ Category  
Composizione/ Composition

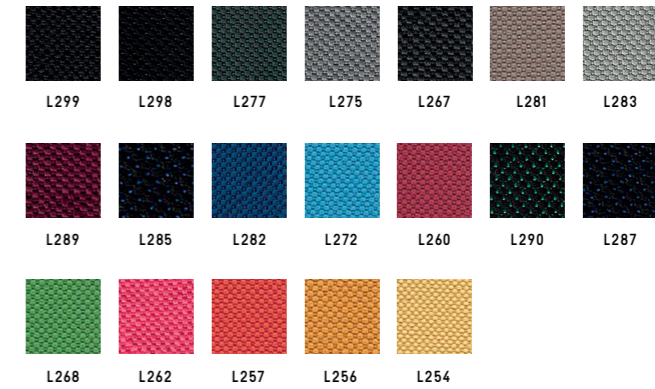
A  
100% polypropilene FR



**SALÒ**



L259



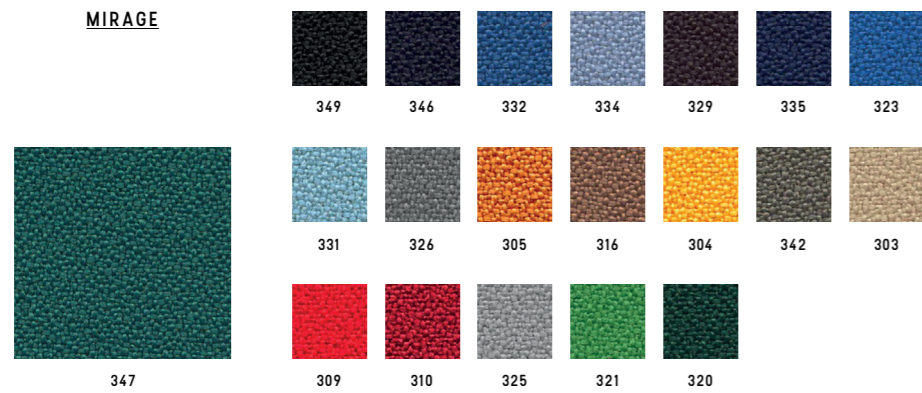
Categoria/ Category  
Composizione/ Composition

B  
100% polyester FR



**PUGI**

**MIRAGE**

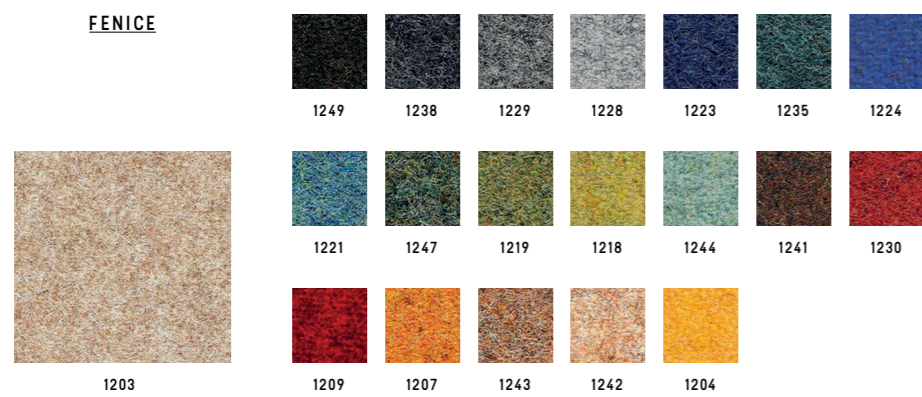


Categoria/ Category  
Composizione/ Composition

**B**  
100% polyester FR



**FENICE**



Categoria/ Category  
Composizione/ Composition

**C**  
75% wool + 25% polyamide



**BISENTIUM**



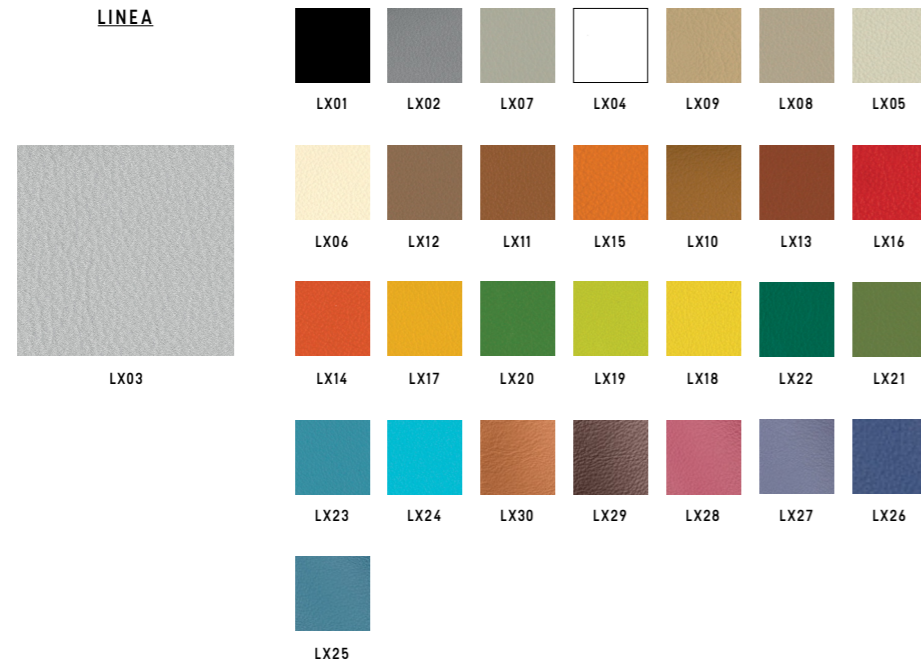
Categoria/ Category  
Composizione/ Composition

**K**  
30% wool + 28% polyester + 26% polyamide  
16% silk



**MASTROTTO**

**LINEA**

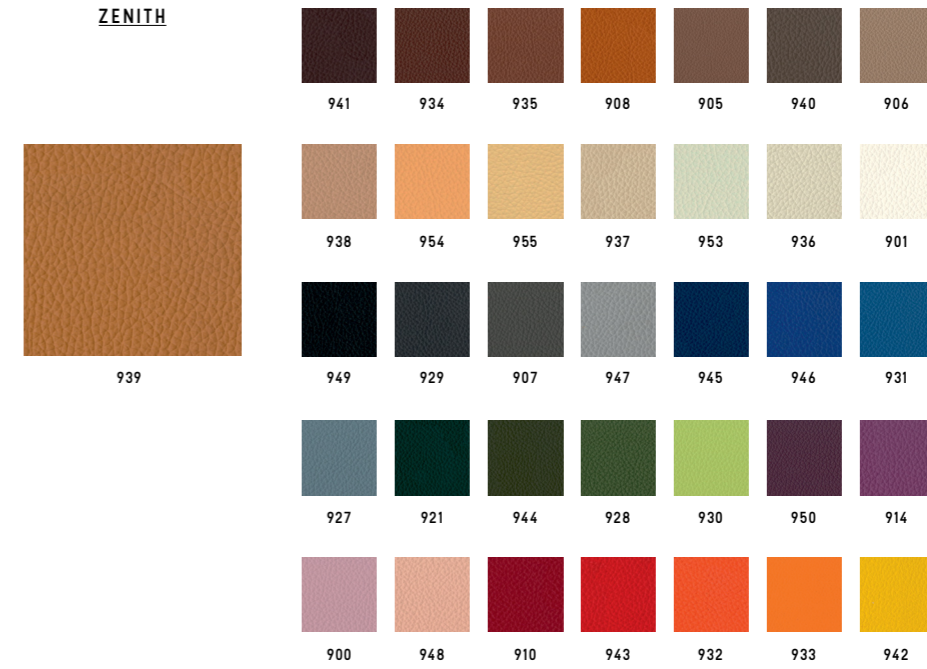


Categoria/ Category  
Composizione/ Composition

TOP (pieno fiore)  
Bovine leather



**ZENITH**



Categoria/ Category  
Composizione/ Composition

TP  
Bovine leather

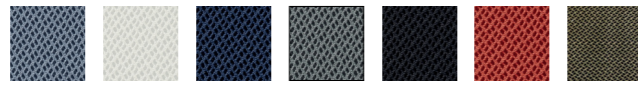




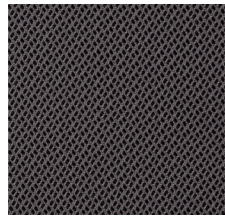


RETI TRIDIMENSIONALE

RHYTHM



TAZ TBI TBL TGR TNE TRO TTO



TAN

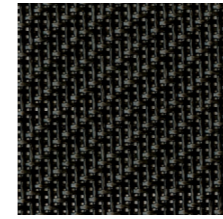


TVD

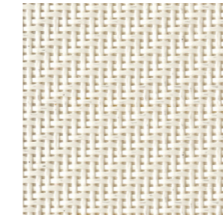
Categoria/ Category D  
 Composizione/ Composition 100% polyester



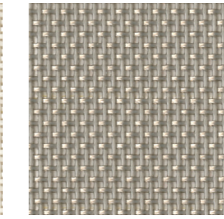
CATEGORIA L/  
 CATEGORY L



849



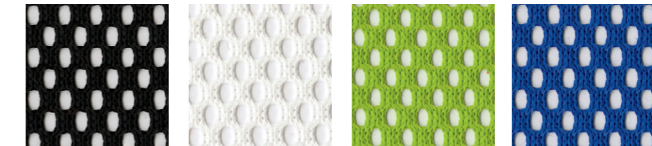
801



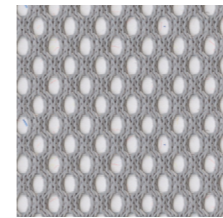
825

Categoria/ Category L  
 Composizione/ Composition 73% PVC + 27% poliestere/ 73% PVC + 27% polyester   
 849-801: Light, Nulite, Smartlight, Pop,  
 825: Light, Nulite

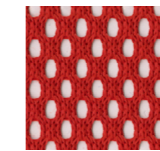
CATEGORIA R/  
 CATEGORY R



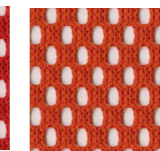
NE BI VD BL



GR



RO



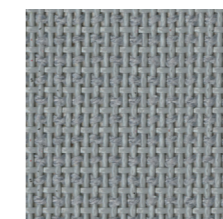
AR

Categoria/ Category R  
 Composizione/ Composition 100% poliestere/ 100% polyester   
 Solo per Aire Jr, Post, Pop, Switch/  
 Only for Aire Jr, Post, Pop, Switch

CATEGORIA Z/  
 CATEGORY Z



NE

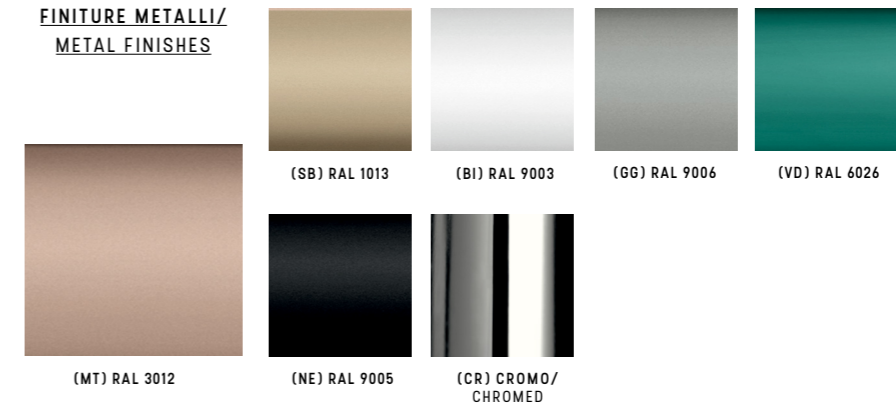


GR

Categoria/ Category Z  
 Composizione/ Composition 60% PVC + 40% poliestere/ 60% PVC + 40% polyester   
 Solo per Overtime Evo, Extralight/  
 Only for Overtime Evo, Extralight



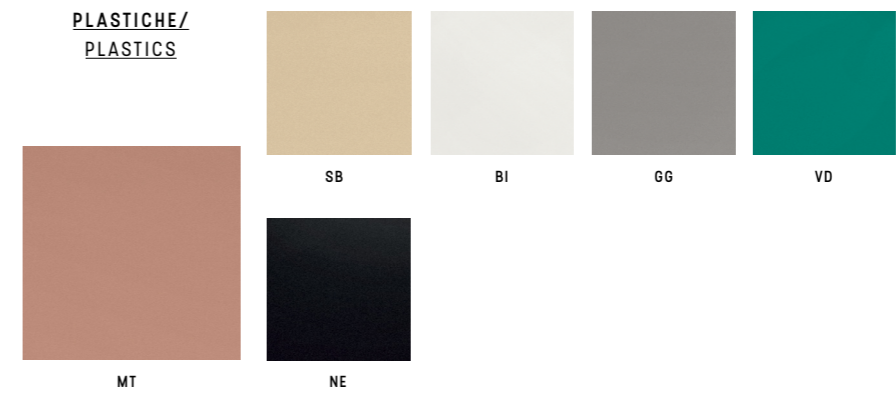
**FINITURE METALLI/  
METAL FINISHES**



Categoria/ Category

FE

**PLASTICHE/  
PLASTICS**



Categoria/ Category

PE

**LEGNO/  
WOOD**



Faggio/ Beech

Rovere/ Oak

Noce/ Walnut

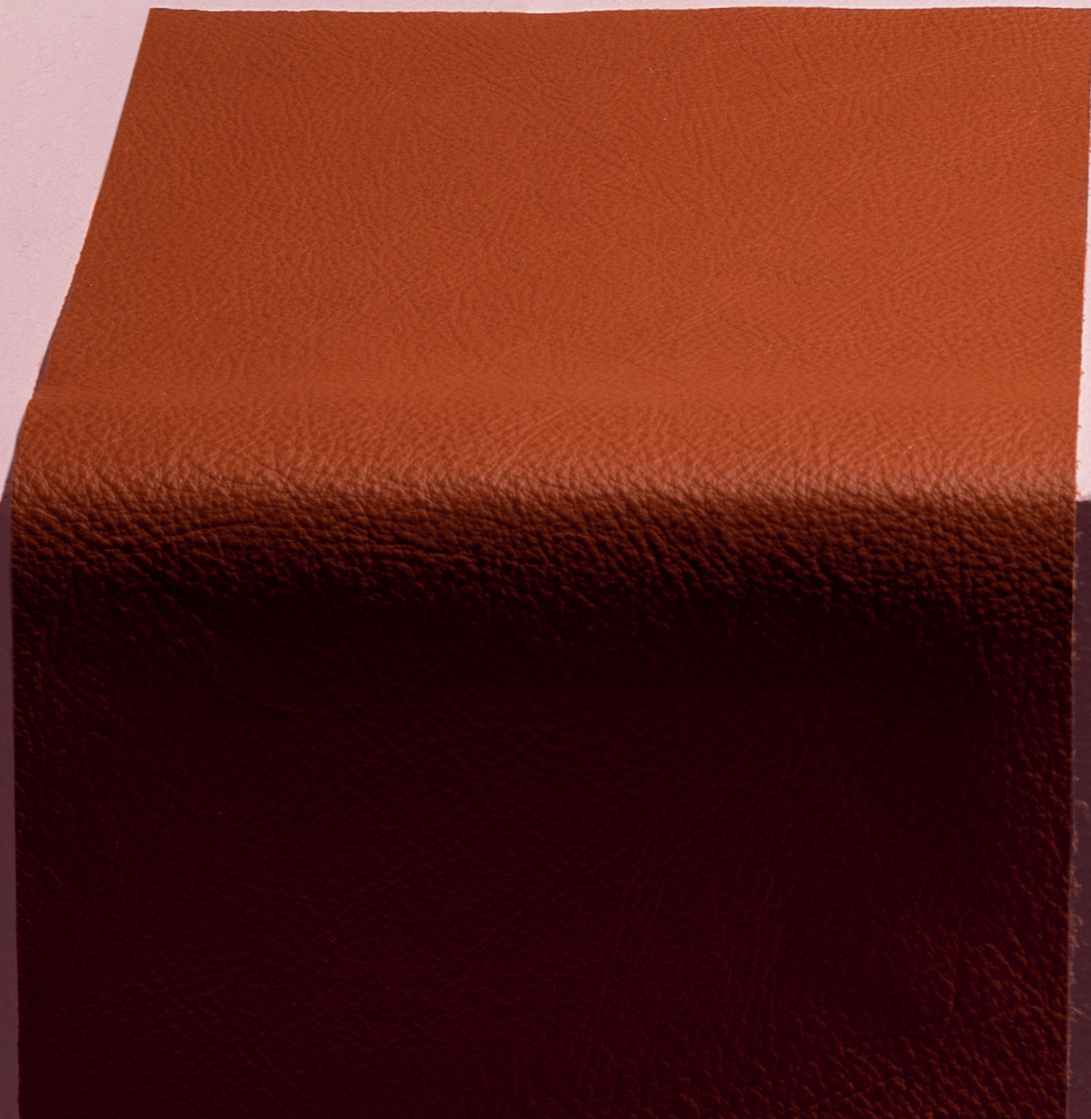
Wenge'

Standard

A progetto/ For customized projects

Categoria/ Category  
Composizione/ Composition

LE  
Legno massello di faggio in colore naturale/ Solid beech wood natural finish.  
Legno massello di rovere con verniciatura di tipo acrilico in vari colori/ Solid oak wood natural finishes.



[Luxy.com](http://Luxy.com)