

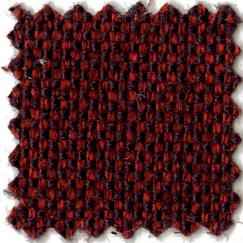
1847

 **LUXY.**

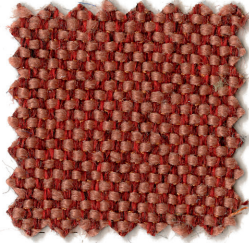
CATEGORIA D/
CATEGORY D

TESSUTO/
UPHOLSTERY

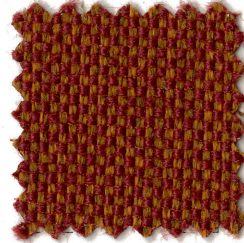
ACTON
VESCOM



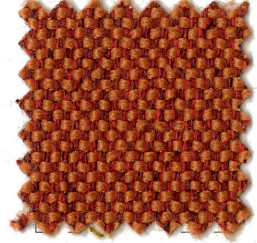
1811



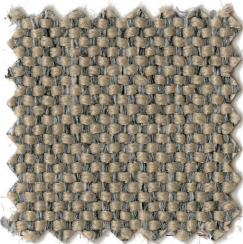
1816



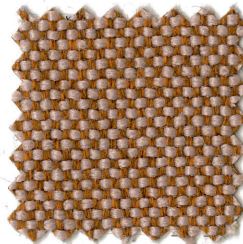
1809



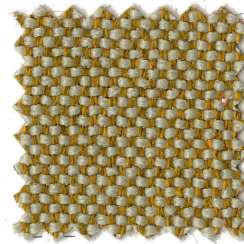
1807



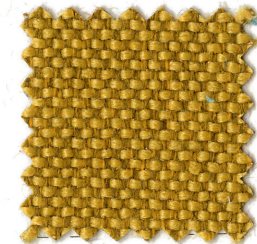
1803



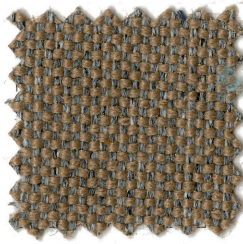
1812



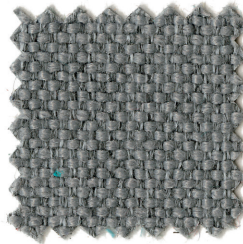
1805



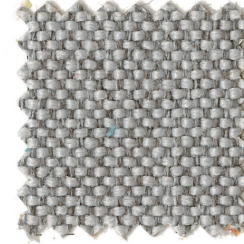
1804



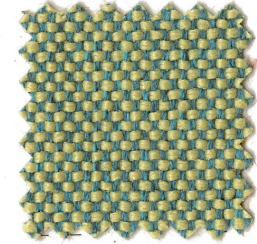
1831



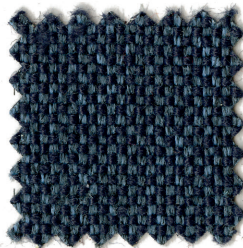
1826



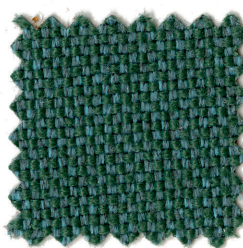
1825



1818



1832



1820





DESTINAZIONI D'USO/ APPLICATIONS
Rivestimenti per imbottiti, casa, ufficio
e contract/ Offices, hotels, institutions,
domestic use

RESISTENZA ALL'ABRASIONE
(CICLI MARTINDALE)/ ABRASION RESISTANCE
(MARTINDALE CYCLES)

EN ISO 12947-2	90.000
ASTM D4157	100.000

RESISTENZA ALLO SFREGAMENTO/ FASTNESS
TO RUBBING

EN ISO 105 - X12	
Umido/ Wet	4/5
Secco/ Dry	4/5
AATCC 8	
Umido/ Wet	5
Secco/ Dry	5

RESISTENZA ALLA LUCE/ LIGHT FASTNESS

EN ISO 105 - B02	6
AATCC 16.3: 40 Hours	4

PILLING

EN ISO 12945-2	4
ASTM D3511	5

MANUTENZIONE E PULIZIA/ MAINTENANCE
AND CLEANING

Usare con regolarità aspirapolvere a beccuccio liscio,
senza spazzolare/ Hoover regularly and don't brush

Restringimento / Shrinkage (%)

Ordito / Warp	-2.7
Trama / Weft	-0.6

ACTON

CARATTERISTICHE/ DESCRIPTION
100% poliestere ignifugo
Altezza 141 cm
Peso 429 g/m²
Possono verificarsi differenze di colore

100% flame retardant polyester
Width 141 cm
Weight 429 g/m²
Differences in color may occur

INFIAMMABILITÀ/ FLAMMABILITY

11M UNI 9175
EN 1021 - 1
EN 1021 - 2
BS 5852 CRIB 5
TB 117:2013
IMO FTP 2010 part 8
DIN 4102 B1
NFPA 260, Class 1

RESISTENZA ALLA TRAZIONE/ BREAKING STRENGTH

EN ISO 13937 (N)	
Ordito/ Warp	1380
Trama/ Weft	1790
ASTM D5034 (N)	
Ordito/ Warp	263 lbs
Trama/ Weft	345 lbs

5 ANNI DI GARANZIA/ 5 YEAR WARRANTY

REVISIONE TESSUTI 05-2021/
FABRIC REVIEW 2021-05



USCG -
EU MRA
0038