

1379

 **LUXY.**

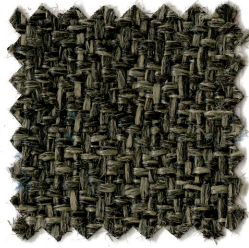
CATEGORIA B/
CATEGORY B

TESSUTO/
UPHOLSTERY

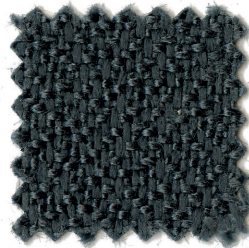
EXPO
 Chioccarello



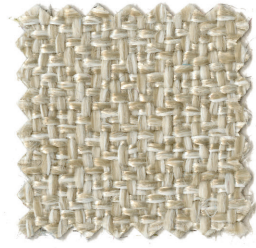
1399



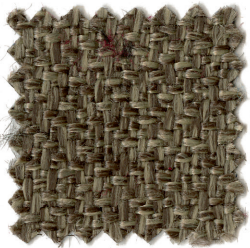
1367



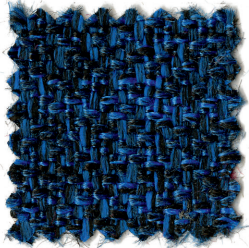
1377



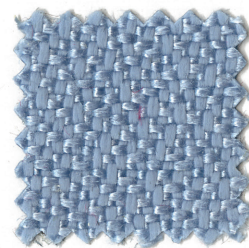
1352



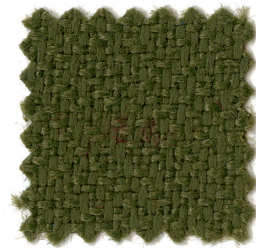
1366



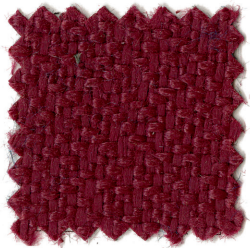
1396



1394



1369



1363





DESTINAZIONI D'USO/ APPLICATIONS
Rivestimenti per imbottiti, casa e contract
Offices, hotels, institutions, domestic use

RESISTENZA ALL'ABRASIONE
(CICLI MARTINDALE)/ ABRASION RESISTANCE
(MARTINDALE CYCLES)
UNI EN ISO 12947-2 >100.000

RESISTENZA ALLO SFREGAMENTO/ FASTNESS
TO RUBBING (EN ISO 105 - X12)
Umido/ Wet 5
Secco/ Dry 5

RESISTENZA ALLA LUCE/ LIGHT FASTNESS
(EN ISO 105 - B02) 5

MANUTENZIONE E PULIZIA/ MAINTENANCE
AND CLEANING
Usare con regolarità aspirapolvere a beccuccio
liscio, senza spazzolare/ Hoover regularly and
don't brush

EXPO

CARATTERISTICHE/ DESCRIPTION
100% propitex FR battereostatico
Altezza 140 cm
Peso 300 g/m²
Tinto a filo
Possono verificarsi differenze di colore

100% propitex FR bacteriostatic
Width 140 cm
Weight 300 g/m²
Yarn dyed
Colour differences may occur

INFIAMMABILITÀ/ FLAMMABILITY
11M UNI 9175
EN 1021 -1
EN 1021 -2
BS 5852 CRIB 5
TB 117:2013
IMO

ASSORBIMENTO ACUSTICO/
ACOUSTIC ABSORPTION
UNI EN ISO 354:2003

5 ANNI DI GARANZIA/ 5 YEAR WARRANTY

REVISIONE TESSUTI 05-2021/
FABRIC REVIEW 2021-05

