



The Place for Ideas

TIMELESS

Design by Andrea Citton

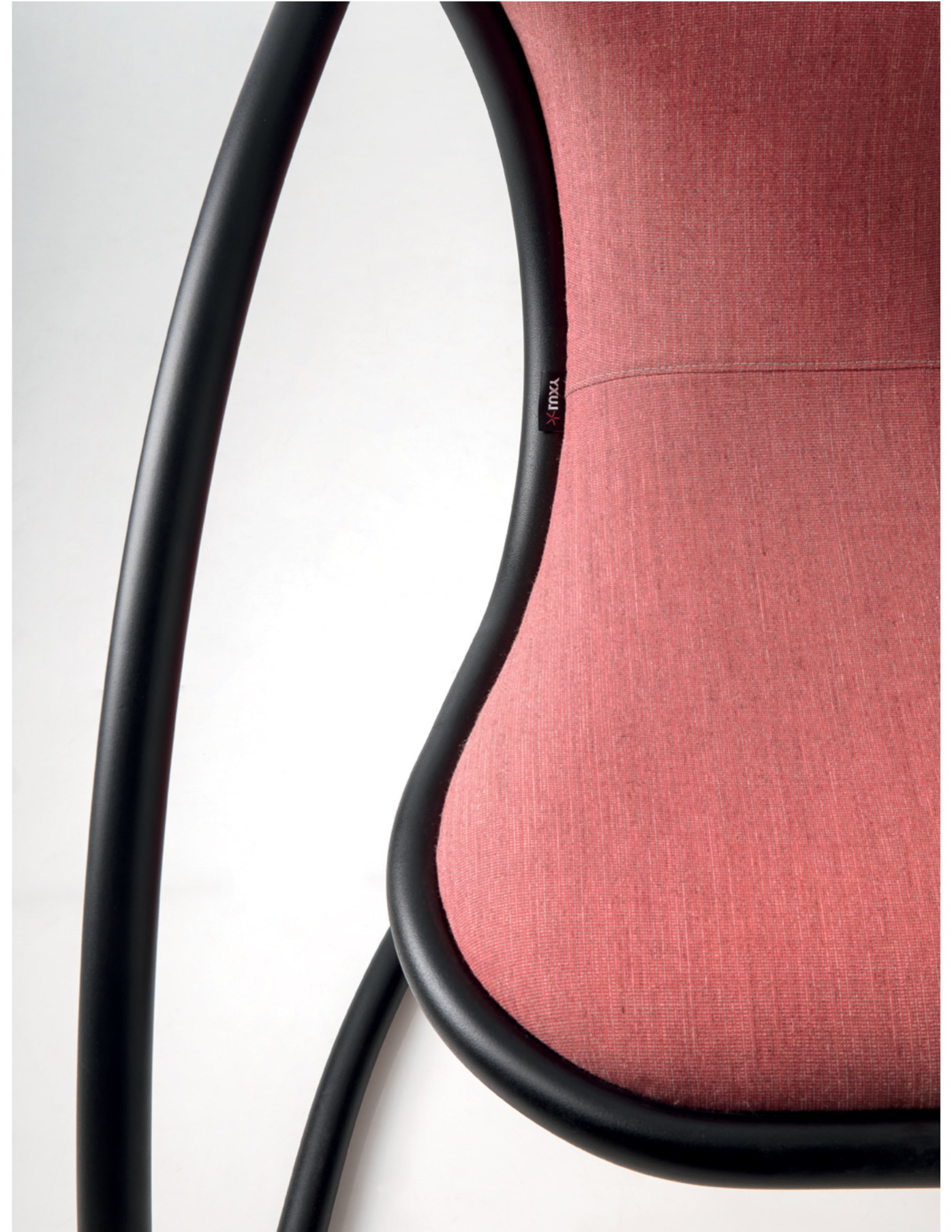
Leggerezza eterea, bellezza ricercata e comodità innata. Timeless racchiude nella sua armoniosa semplicità la mutevolezza delle cose regalando un momento di completa distensione del corpo e della mente. L'imbottitura della seduta rilassa i sensi mentre il design, mix di essenzialità e tecnologia, si sposa alla perfezione con un ambiente moderno, deciso, open air. Come un'opera d'arte, Timeless nella sua autenticità domina lo spazio in cui si trova.

Eternal weightlessness, refined beauty and innate comfort. With its harmonious simplicity, Timeless expresses the beauty of change while offering moments of total relaxation for both body and mind. The seat's padding puts the senses at ease while the design—blending the essential with technology is the perfect addition to a modern, decisive and open-air space. A work of art in its own right, Timeless dominates any space with its authenticity.





TIMELESS
Modello TS1/ TS1 model



TIMELESS

Design by Andrea Citton
Lounge/ Lounge seating



TS1

L 76 x W 75 x H 81 cm



Tutte le finiture, i tessuti, i meccanismi, le caratteristiche specifiche e gli accessori di ogni modello sono consultabili sul listino/
All finishes, fabrics, mechanisms, specific features and accessories of each model are available on the price list.

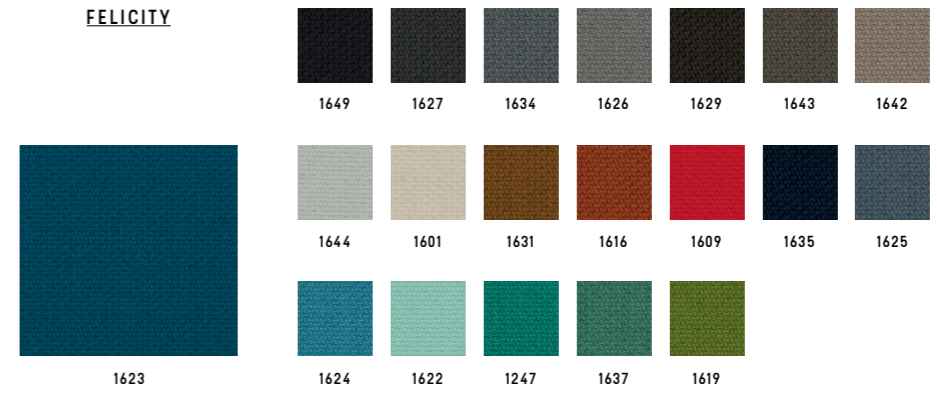
MATERIALI

MATERIALI/ MATERIALS



GABRIEL

FELICITY

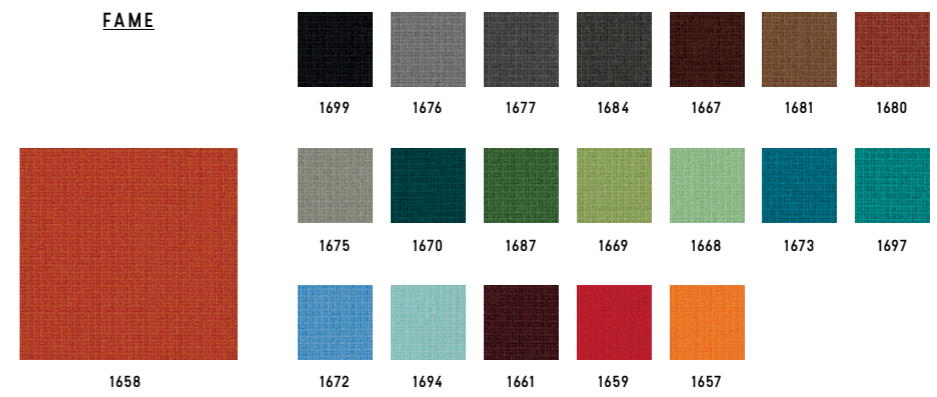


Categoria/ Category
Composizione/ Composition
Note/ Notes

C
100% polyester
100% recycled fabric



FAME



Categoria/ Category
Composizione/ Composition

D
95% New Zeland wool + 5% polyamide



BREEZE FUSION



Categoria/ Category
Composizione/ Composition

K
88% New Zeland wool + 12% polyamide



GABRIEL

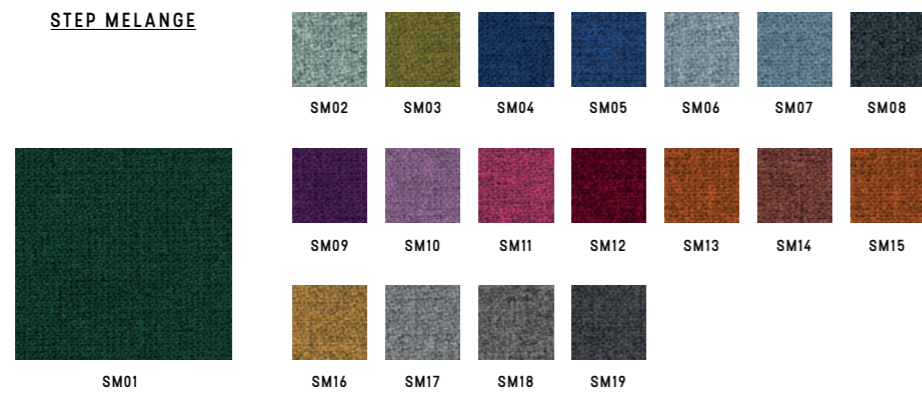
SAVOY



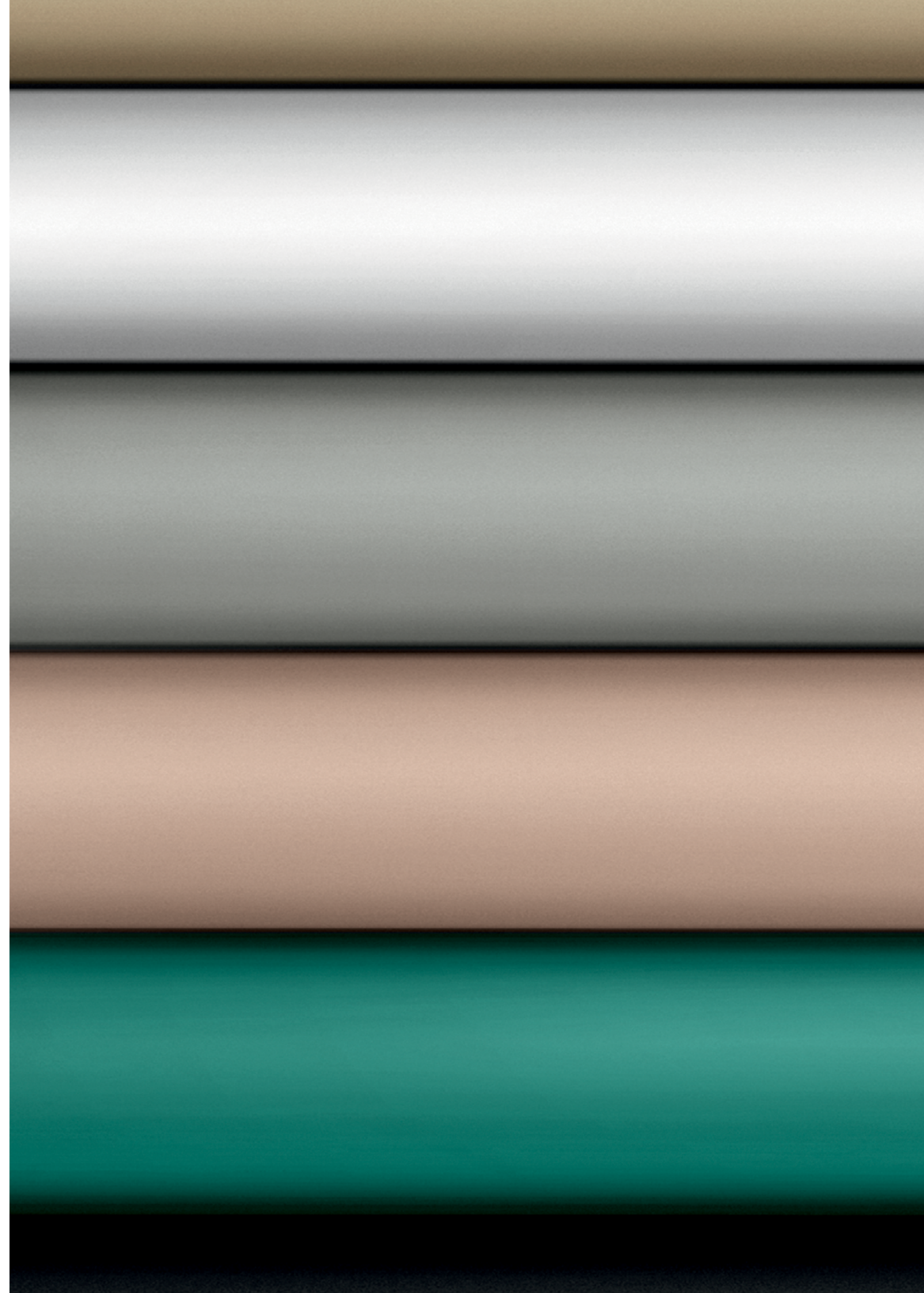
Categoria/ Category **K**
 Composizione/ Composition **100% Trevira CS**



STEP MELANGE

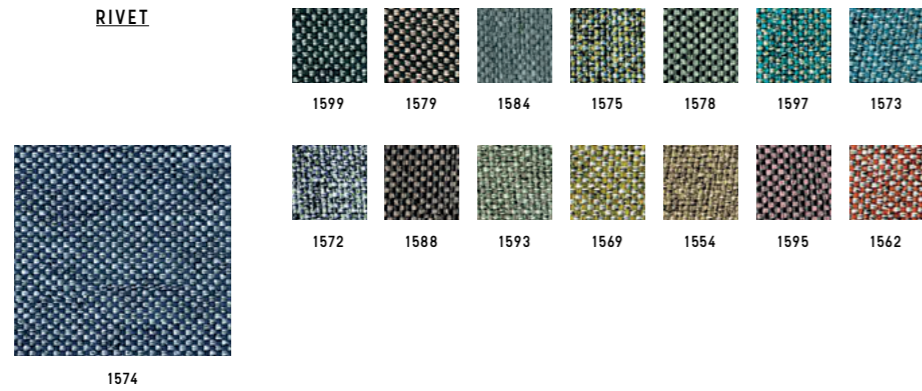


Categoria/ Category **D**
 Composizione/ Composition **100% Trevira CS**



CAMIRA

RIVET



Categoria/ Category **C**
 Composizione/ Composition 100% reprove
 Note/ Notes 100% recycled fabric



KVADRAT

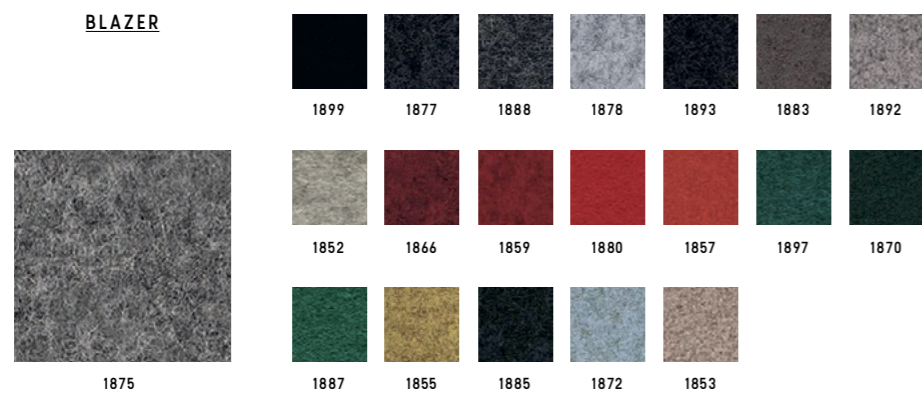
RELATE



Categoria/ Category **D**
 Composizione/ Composition 100% trevira CS
 Note/ Notes 100% recycled fabric



BLAZER



Categoria/ Category **K**
 Composizione/ Composition 100% virgin wool



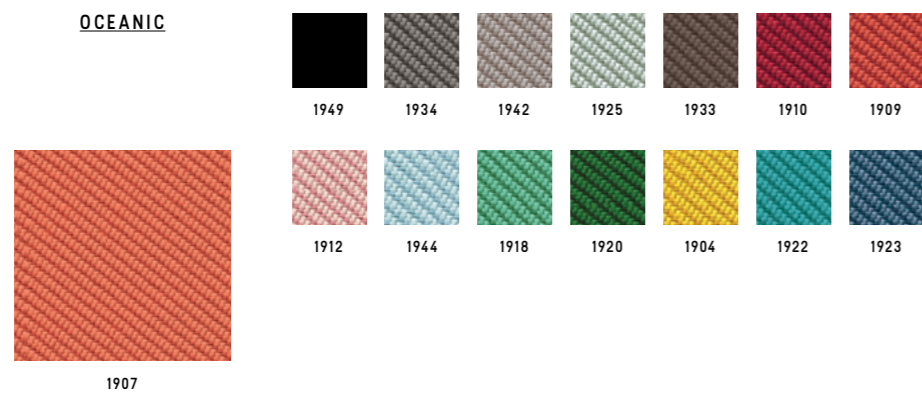
REMIX 3



Categoria/ Category **K**
 Composizione/ Composition 90% new wool worsted + 10% nylon



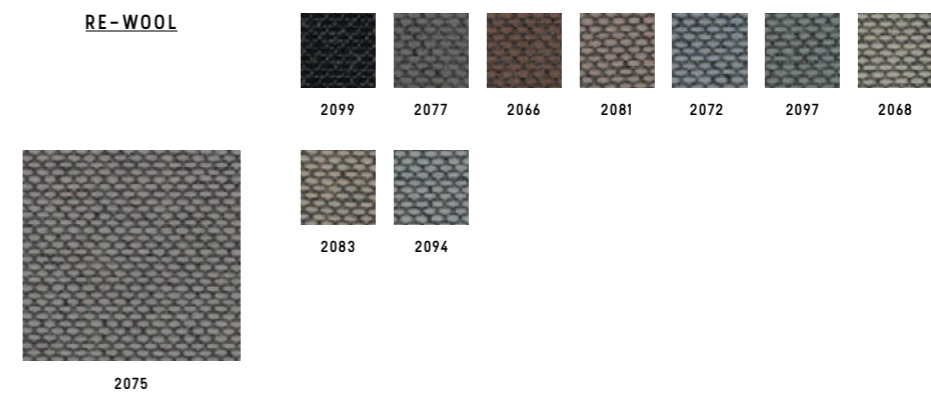
OCEANIC



Categoria/ Category **K**
 Composizione/ Composition 100% post-consumer recycled polyester, including 50% SEAQUAL yarn



RE-WOOL

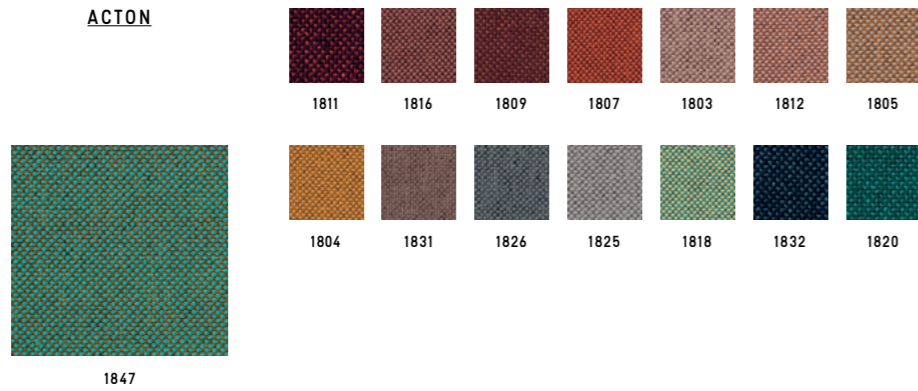


Categoria/ Category **K**
 Composizione/ Composition 45% recycled wool + 45% new wool worsted + 10% nylon



VESCOM

ACTON



Categoria/ Category **D**
 Composizione/ Composition 100% polyester



LIMONTA

TRESIGALLO



Categoria/ Category **K**
 Composizione/ Composition 22% Acrylic + 22% wool + 22% polyester
 13% cotton + 14% viscose + 17% wool



G.S.

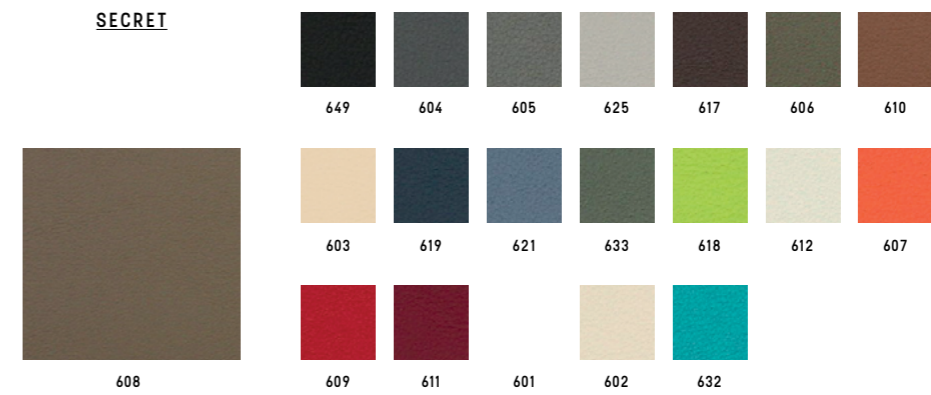
SURROUND



Categoria/ Category **B**
 Composizione/ Composition 87,5% polyvinylchloride (PVC) + 12,5% cotton
 Note/ Notes Antibacterial



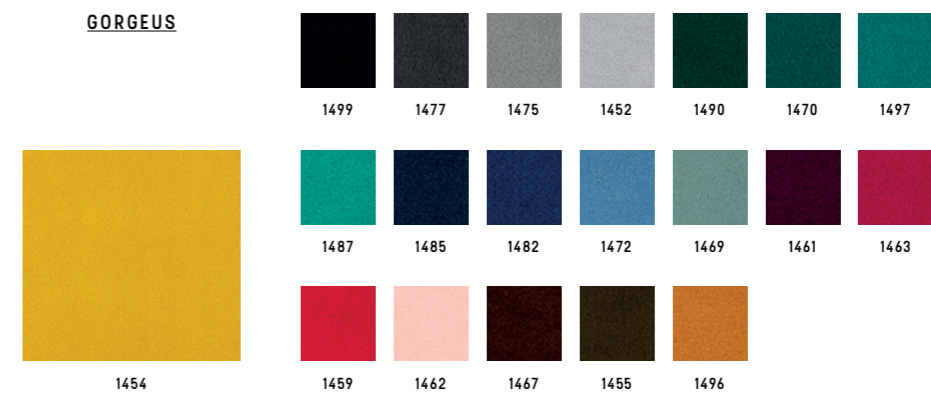
SECRET



Categoria/ Category **C**
 Composizione/ Composition 76% polyvinylchloride (PVC) + 2% polyurethane (PU) + 22% polysulfone (PES)



GORGEUS

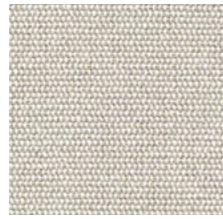


Categoria/ Category **D**
 Composizione/ Composition 100% poliestere FR



CHIOCCARELLO

DISCO COEX



1402



1438 1428 1403 1443 1424 1447 1421



1441 1409

Categoria/ Category
Composizione/ Composition

D
70% cotton + 20% acrylic + 5% viscose
5% linen, 0% formaldehyde



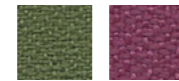
EXPO



1379



1399 1367 1377 1352 1366 1396 1394



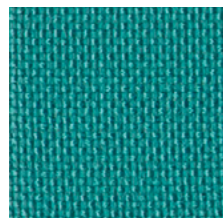
1369 1363

Categoria/ Category
Composizione/ Composition
Note/ Notes

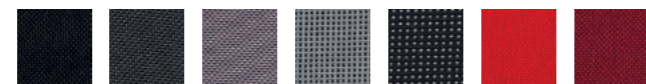
B
100% propitex Fr bacteriostatic
Bacteriostatic



MADRID



L097



L099 L077 L075 L088 L079 L059 L061



L060 L095 L067 L085 L074 L096 L082



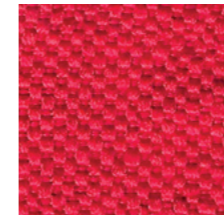
L073 L069 L054 L068 L087

Categoria/ Category
Composizione/ Composition

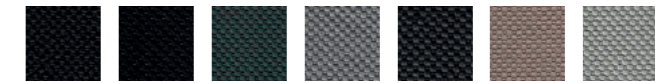
A
100% polypropilene FR



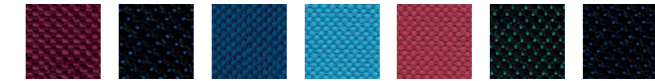
SALÒ



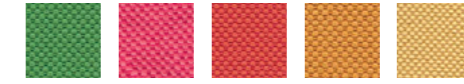
L259



L299 L298 L277 L275 L267 L281 L283



L289 L285 L282 L272 L260 L290 L287



L268 L262 L257 L256 L254

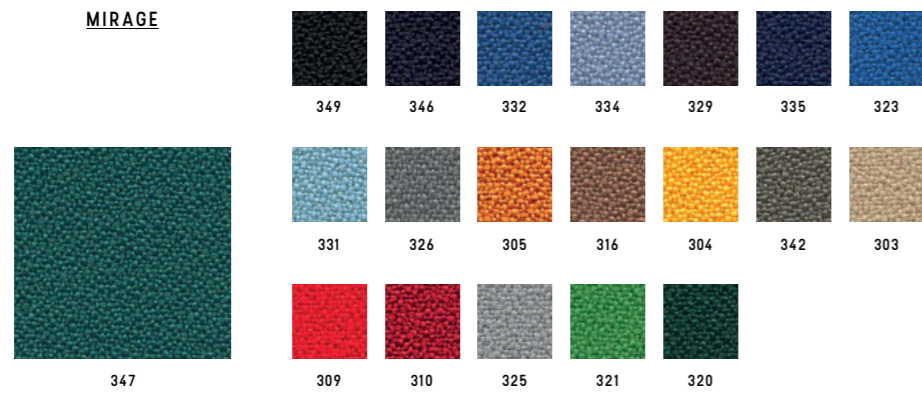
Categoria/ Category
Composizione/ Composition

B
100% polyester FR



PUGI

MIRAGE

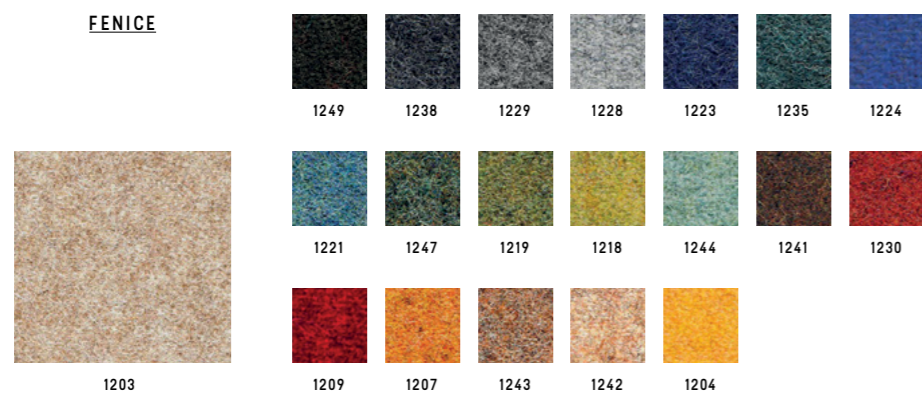


Categoria/ Category
Composizione/ Composition

B
100% polyester FR



FENICE



Categoria/ Category
Composizione/ Composition

C
75% wool + 25% polyamide



BISENTIUM



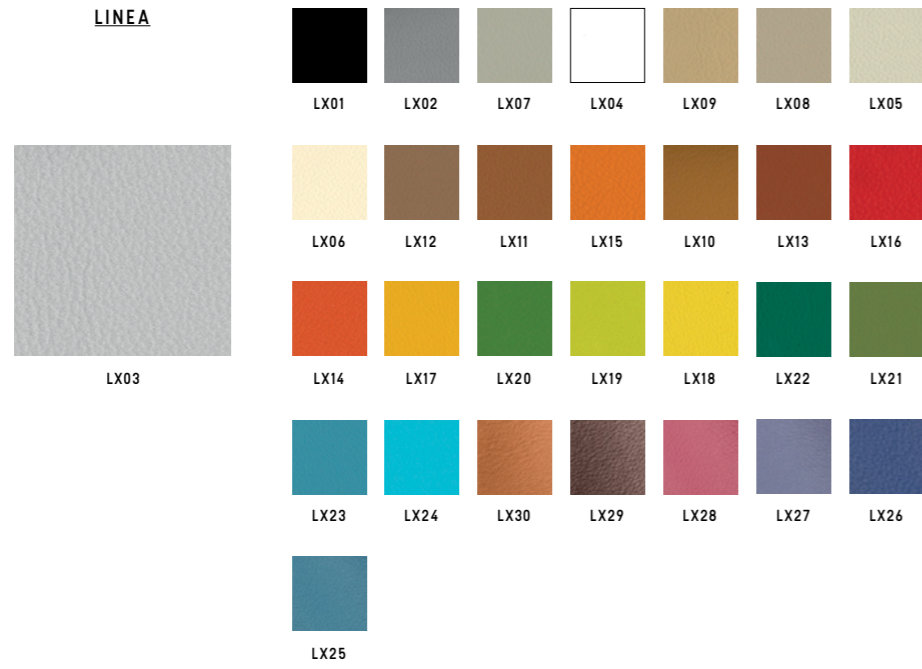
Categoria/ Category
Composizione/ Composition

K
30% wool + 28% polyester + 26% polyamide
16% silk



MASTROTTO

LINEA

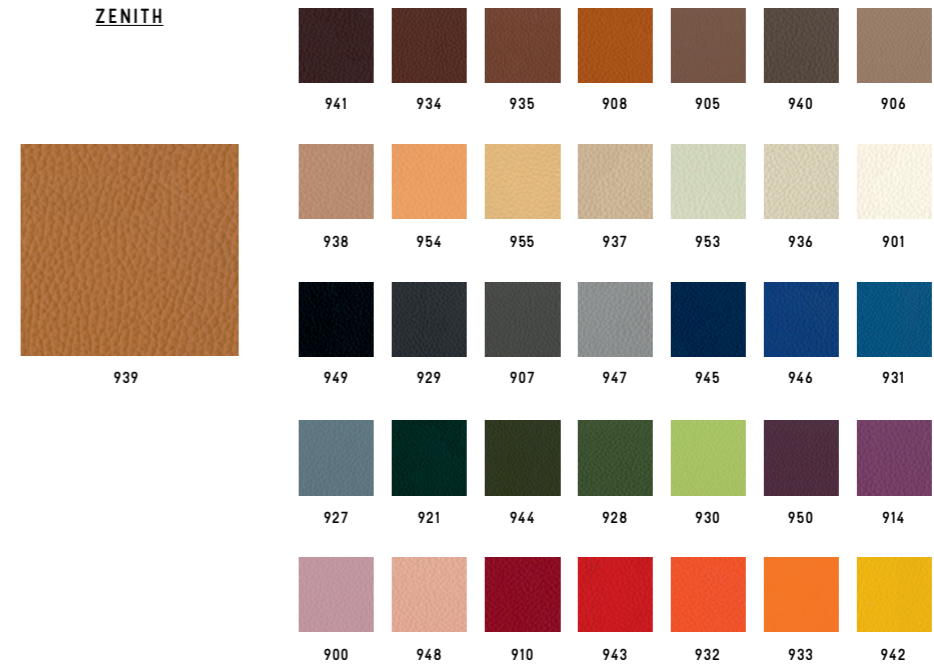


Categoria/ Category
Composizione/ Composition

TOP (pieno fiore)
Bovine leather



ZENITH



Categoria/ Category
Composizione/ Composition

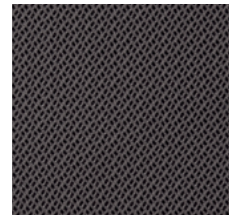
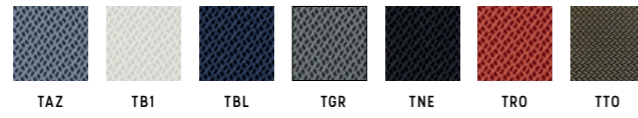
TP
Bovine leather





RETI TRIDIMENSIONALE

RHYTHM



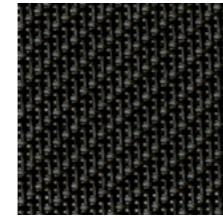
TAN

TVD

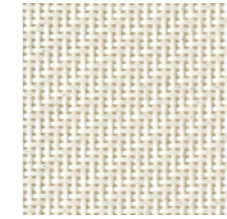
Categoria/ Category D
 Composizione/ Composition 100% polyester



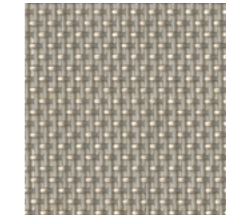
CATEGORIA L/
 CATEGORY L



849



801

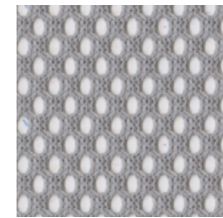


825

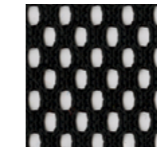
Categoria/ Category L
 Composizione/ Composition 73% PVC + 27% poliestere/ 73% PVC + 27% polyester
 849-801: Light, Nulite, Smartlight, Pop,
 825: Light, Nulite



CATEGORIA R/
 CATEGORY R



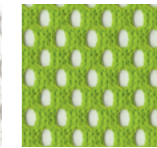
GR



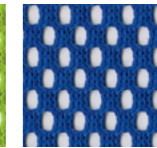
NE



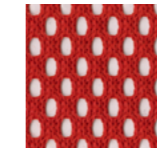
BI



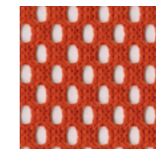
VD



BL



RO



AR

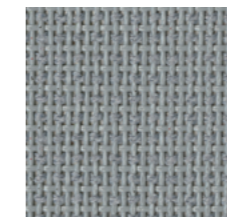
Categoria/ Category R
 Composizione/ Composition 100% poliestere/ 100% polyester
 Solo per Aire Jr, Post, Pop, Switch/
 Only for Aire Jr, Post, Pop, Switch



CATEGORIA Z/
 CATEGORY Z



NE



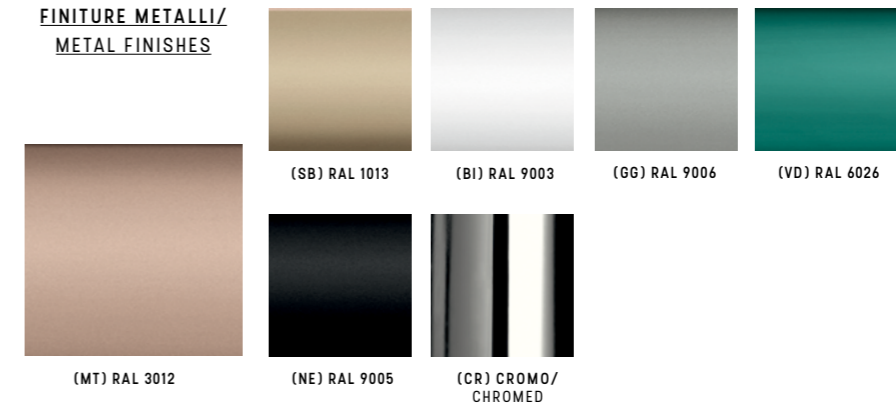
GR

Categoria/ Category Z
 Composizione/ Composition 60% PVC + 40% poliestere/ 60% PVC + 40% polyester
 Solo per Overtime Evo, Extralight/
 Only for Overtime Evo, Extralight





**FINITURE METALLI/
METAL FINISHES**



Categoria/ Category

FE

**PLASTICHE/
PLASTICS**



Categoria/ Category

PE

**LEGNO/
WOOD**



Faggio/ Beech

Rovere/ Oak

Noce/ Walnut

Wenge'

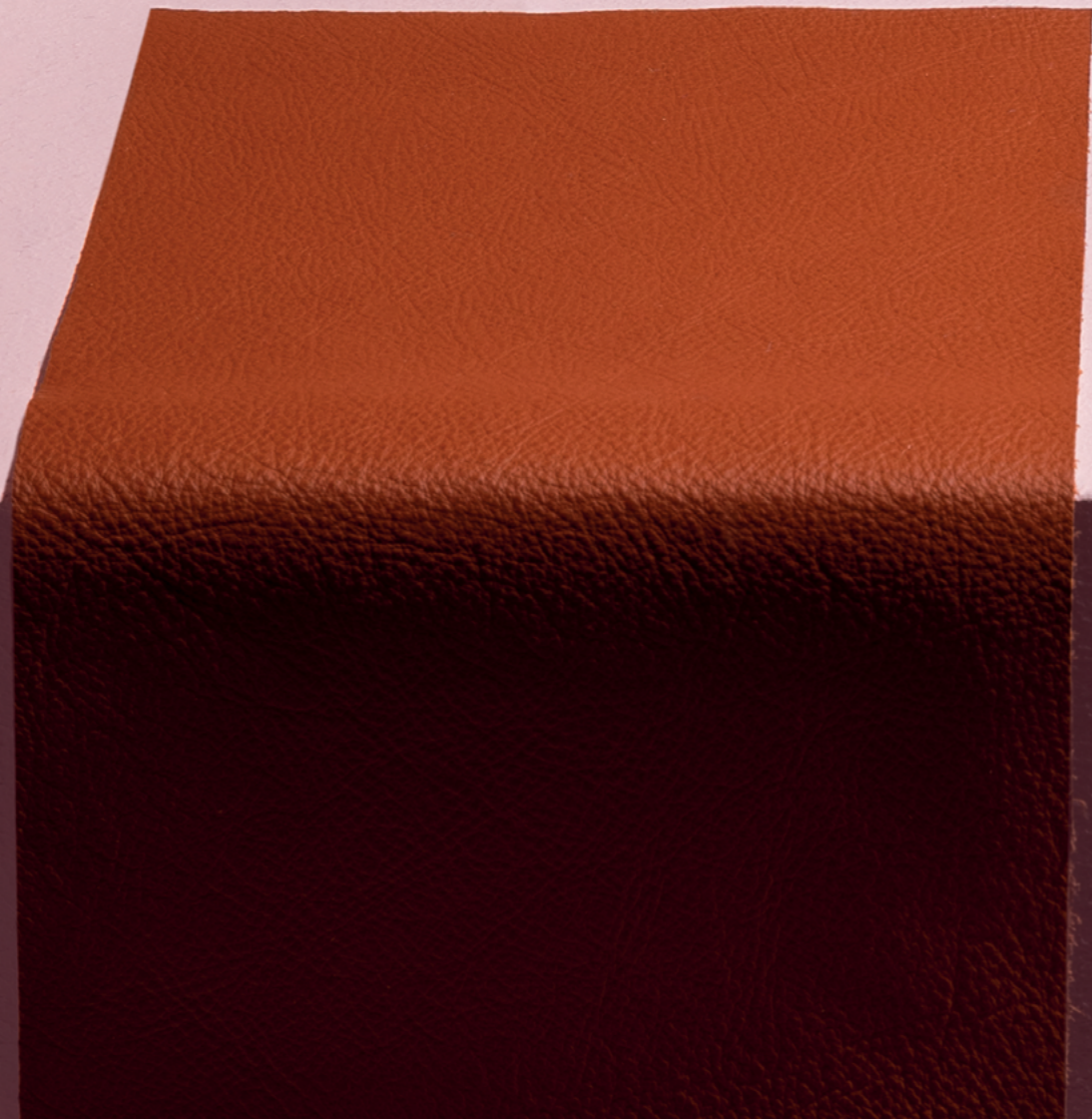
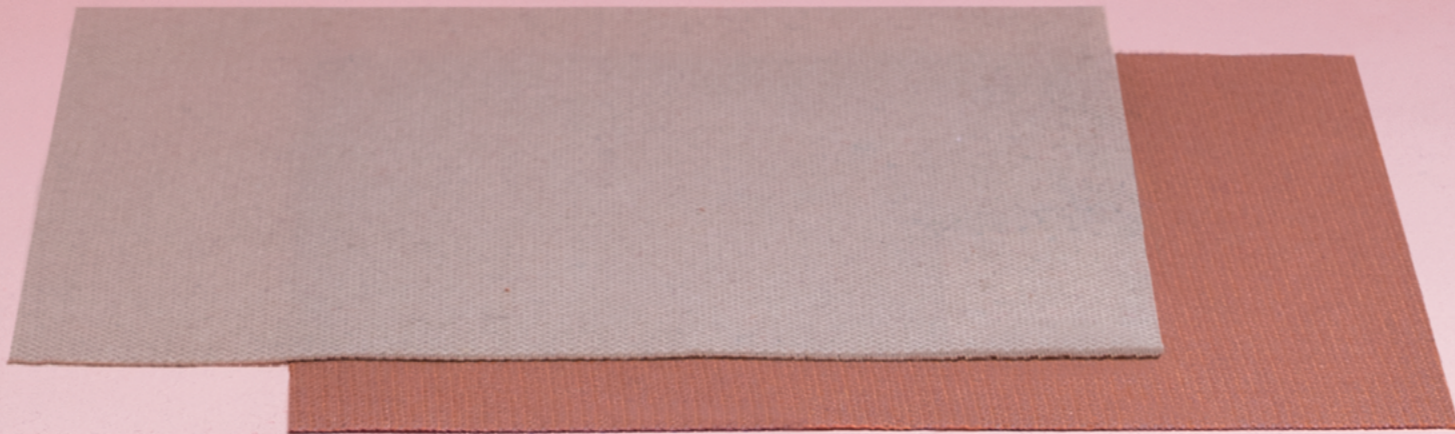
Standard

A progetto/ For customized projects

Categoria/ Category
Composizione/ Composition

LE

Legno massello di faggio in colore naturale/ Solid beech wood natural finish.
Legno massello di rovere con verniciatura di tipo acrilico in vari colori/ Solid oak wood natural finishes.



Luxy.com