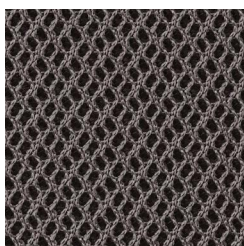


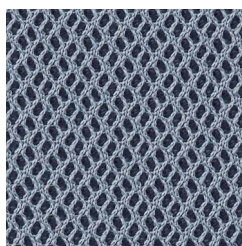
CATEGORIA D  
CATEGORY D

TESSUTO  
UPHOLSTERY

RHYTHM  
**Gabriel**®



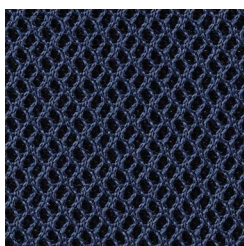
TAN



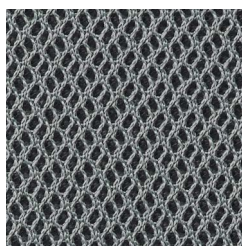
TAZ



TBI



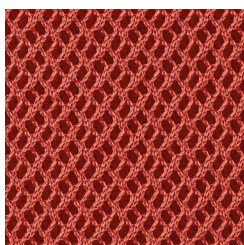
TBL



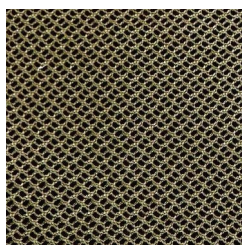
TGR



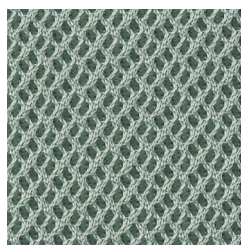
TNE



TR0



TTO



TVD

**DESTINAZIONI D'USO / APPLICATIONS**

Rivestimenti per imbottiti, casa, ufficio e contract / Office, contract use

**RESISTENZA ALL'ABRASIONE (CICLI MARTINDALE) / ABRASION RESISTANCE (MARTINDALE CYCLES)**

EN ISO 12497-2 70.000

ASTM D4157-07 100.00

**RESISTENZA ALLO SFREGAMENTO / FASTNESS TO RUBBING (EN ISO 105-X12)**

Umido / Wet 4/5

Secco / Dry 4/5

**RESISTENZA ALLA LUCE / LIGHT FASTNESS**

(EN ISO 105-B02) 5/7

**MANUTENZIONE E PULIZIA / MAINTENANCE AND CLEANING**

Lavaggio a secco P(W) / Dry cleaning P(W)

**CARATTERISTICHE / DESCRIPTION**

100% Poliestere / Polyester

160 cm Altezza / Height

328 g/m<sup>2</sup> Peso / Weight

Possono verificarsi differenze di colore / Differences in color may occur

**INFIAMMABILITÀ / FLAMMABILITY**

EN 1021-1

EN 1021-2

BS 5852 CRIB 5

DIN 4102-B1

NFP 92-503 M3

CA TB 117-2013

BS 7176

Medium hazard

Class Uno UNI 8456 UNI 9174

Le performance ritardanti di fiamma dipendono dalla schiuma utilizzata.

Will also pass other flammability standards. Flame retardant performance is dependent upon the foam used.

**10 ANNI DI GARANZIA / 10 YEAR WARRANTY****REVISIONE TESSUTI 02-2023 / FABRIC REVIEW 2023-02**