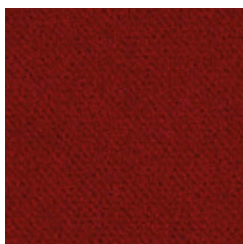




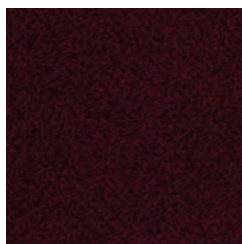
CATEGORIA K  
CATEGORY K

TESSUTO  
UPHOLSTERY

SAVOY  
**Gabriel**



SA01



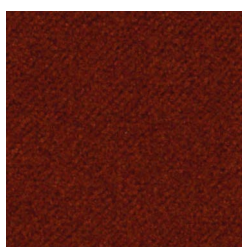
SA02



SA03



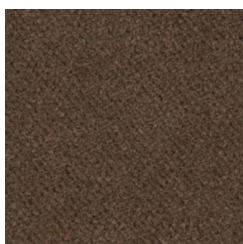
SA04



SA05



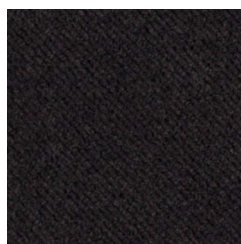
SA06



SA07



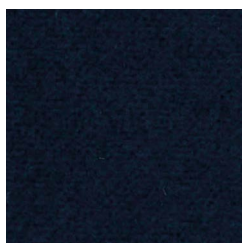
SA08



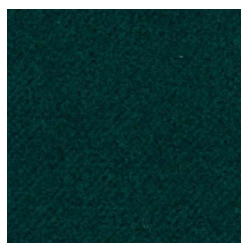
SA09



SA10



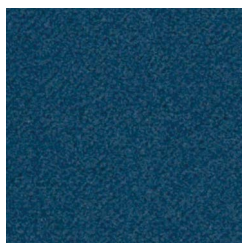
SA11



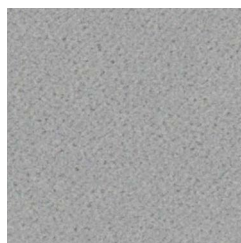
SA12



SA13



SA14



SA15



SA16

## DESTINAZIONI D'USO / APPLICATIONS

Rivestimenti per imbottiti, casa, ufficio e contract / Office, contract use

RESISTENZA ALL'ABRASIONE (CICLI MARTINDALE) / ABRASION RESISTANCE  
(MARTINDALE CYCLES)

EN ISO 12497-2 100.000

ASTM D4157-07 100.00

## RESISTENZA ALLO SFREGAMENTO / FASTNESS TO RUBBING (EN ISO 105-X12)

Umido / Wet 4/5

Secco / Dry 4/5

## RESISTENZA ALLA LUCE / LIGHT FASTNESS

(EN ISO 105-B02) 5/8

## MANUTENZIONE E PULIZIA / MAINTENANCE AND CLEANING

Lavaggio a secco P(W) / Dry cleaning P(W)

## CARATTERISTICHE / DESCRIPTION

100% Trevira CS / Trevira CS

140 cm Altezza / Height

429 g/m<sup>2</sup> Peso / Weight

Possono verificarsi differenze di colore / Differences in color may occur

## INFIAMMABILITÀ / FLAMMABILITY

EN 1021-1

EN 1021-2

BS 5852 CRIB 5

DIN 4102-B1

DIN EN 13501-1 B-s1,d0

NFP 92-503/504/505 M1

AM 18-NF D 60-013- (solo per tessuti) / (only for fabric)

IIM UNI 9175

CA TB 117-2013

Le performance ritardanti di fiamma dipendono dalla schiuma utilizzata.

Will also pass other flammability standards. Flame retardant performance is dependent upon the foam used.

## 10 ANNI DI GARANZIA / 10 YEAR WARRANTY

## REVISIONE TESSUTI 02-2023 / FABRIC REVIEW 2023-02



Accreditamento del sistema qualità e ambiente secondo le norme ISO 9001 ed ISO 14001.

Incoraggiamento all'uso di fibre sostenibili. Durevole e di alta qualità. Limitazione delle sostanze pericolose. Quality and environmental system accreditation according to ISO 9001 and ISO 14001.

Encouraging the use of sustainable fibres. Durable and high quality. Hazardous substances restricted.